

PRODUCT CATALOG

QUALITY ON THE GO!



WATER TREATMENT

LEADING TECHNOLOGY. THERE FOR YOU EVERY DAY.

Water is our most important food.
Clean and hygienic drinking water from every tap is the basic requirement for the retention of health and sense of wellbeing.

However, water means more than that:
It is the heat transfer medium in our heaters, it flows through house installations and air conditioners.
It cools machines, it keeps production processes going and it cleans and disinfects.

The requirements for water quality are varied and depend on applications.

JUDO is a solutions provider.
Water treatment products and systems, engineered for optimal results. Conform with the latest relevant standards and guidelines.

Geared to our client's specific requirements and, most importantly of all, governed by our own stringent quality standards.

Our daily bread for more than 80 years!



Chief Executive Officer
Kathrin Reggi-Dopschlaff

Chief Executive Officer
Hartmut J. Dopschlaff

QUALITY MADE IN GERMANY



Product concept, engineering, testing, production and quality control, all in our facilities in the south west of Germany. JUDO products comply with the stringent German standard's requirements supported by a range of international approvals from North America to Australia.

The 2016 edition of our North America catalog contains FEATURED products that are readily available in this market. Other JUDO products are still available and may be ordered at any time. Our staff are here to assist you with all your inquiries.

North America Head Office: 240 Lesmill Road, Toronto, ON M3B 2T5 CANADA
USA Address: 501 Amherst Street, Buffalo, NY 14207 USA

General Inquiries:	info@judo-online.com	
Telephone	Toll-Free 866.451.5836	Toronto area 416.441.1556
Fax:	Toll-Free 877.761.3335	Toronto area 416.391.4273
Website:	judo-online.com	

OUR LOCATION. AT WORK AND AT HOME.

At home in Winnenden, just outside of Stuttgart, JUDO is name in water treatment recognised around the world. Administration, project management and the newly opened JULIUS DOPSLAFF Campus for our training programme, water treatment education courses and our customer service department are all located here. We value keeping journeys short, this is also true for our R&D, engineering, design and production which is our only production facility conveniently close in Backnang-Waldrems.

JULIUS DOPSLAFF Campus, our newly opened centre for training and service, is just a stone's throw away.

We value short paths even for development, design and production.

Therefore, we manufacture only in our central production site in the nearby Backnang-Waldrems. Production processes, quality control, systems development all close at hand.

When it comes to distribution, however, there we have a different perspective in view. JUDO has 8 regional branches in Germany and distribution centres and partners in over 50 countries including JUDO branches in Austria, Switzerland, France, Belgium, Netherlands, Luxembourg, Poland, China, Canada and Australia.



JUDO Winnenden: Administration



JUDO Winnenden: JULIUS DOPSLAFF Campus



JUDO Backnang: Development and production



JUDO Hilden: West branch



JUDO BeNeLux, Brussels



JUDO France, Straßburg



JUDO Austria, Stockerau



JUDO Switzerland, Liestal



JUDO North America

TABLE OF CONTENTS

For our most precious commodity, only the best!	Page 5
Innovative technology – created with you in mind	Page 5
Why treat water?	Page 6
Conversion Tables.....	Page 7
Abbreviations.....	Page 8
Don't welcome rust, grime and lime scale into your home!.....	Page 9
JUDO FIMAT.....	Page 10-11
JUDO PROFI and PROFIMAT	Page 12-13
JUDO PROFIMAT-AT and JUDO PROFIMAT-ATP	Page 14-16
JUDO PURE@TAP	Page 17
All water in a heating loop should carry is heat!	Page 18
JUDO FERROCLEAN	Page 18-19
JUDO HEIFI-TOP	Page 20-21
JUDO MAFI	Page 22-23
JUDO HEIFI-AIR-FREE	Page 24-25
JUDO HEIFI-PURE & CLEAN	Page 26-27
JUDO JMHB-RO mini	Page 28-29
General Terms and Conditions of Sale.....	Page 30-31
Product Index.....	Page 32
Contact Information.....	Page 33
There is always a good reason to give your drinking water system a lot of thought.....	Page 34
Quality MADE IN GERMANY and approved internationally!.....	Page 35



FOR OUR MOST PRECIOUS COMMODITY, ONLY THE BEST!

Of all the commodities, we need and use every day, the most precious of them all is water. A clean, hygienically reliable drinking water supply is the key to a fit and healthy lifestyle as well as an inner sense of wellbeing. Water, however, is also more than just that:

- It is a source of luxury, as anyone knows, who has ever lain back in a bathtub of softened water and experienced the sense of relaxation that goes with that.
- It is a source of temperature control in our Hvac and industrial closed loop heating and cooling systems keeping our personal environments well in our comfort zones.

- It keeps machinery cool, ensures production processes are kept running and it is used for cleaning and in disinfection.

The JUDO range of water treatment products and systems is as varied and as widespread as the range of applications they are engineered to service. What all of them have in common, however, are the highest levels of performance standards, quality and workmanship as we believe that when it comes down to our most precious commodity, second best just is not good enough!

INNOVATIVE TECHNOLOGY – CREATED WITH YOU IN MIND

JUDO has 80 years of experience in offering innovative solutions for water treatment in residential and commercial applications. Whether in single home applications, apartment, hotel complexes or manufacturing, potable or

process water applications, our range of products and systems offer not only the latest in technology, but also the support services required to insure this is installed and operated with ease.

Partnerships

We are not just there for you, but also there with you! Our support service does not stop at an email, we are more than happy to offer you the personal support and guidance you need to address problems you may encounter. Personal contact, reliability and trust are the foundations upon which we build our client relations at all levels from initial systems planning stages through to after sales support services.

Innovation

Throughout the company's long history, JUDO has been striving to optimize the treatment process in an innovative and sensible way. The wide range of patents and prizes for innovation in our field bear witness to our success here. Our company specialists offer detailed process knowledge and many years of practical experience ensuring a balanced mix of traditional water treatment methods and tomorrow's technology are combined in a way most beneficial to you, the client.

Quality

The JUDO brand name has long been a benchmark for quality and innovation in the industry at large. Ensuring the highest standards in reliability, durability and ease of use. JUDO products are exclusively German engineered and manufactured underscoring the high reputation products 'made in Germany' enjoy worldwide and are all individually tested before leaving our plant.



WHY TREAT WATER?

Our drinking water supply companies offer the highest standards in drinking water purity and quality. Despite this fact, there is often a need to treat water additionally at point of use. There are several reasons for this including:

- In between leaving the water works and flowing through our faucets, water runs through miles of pipes, many of which were installed decades ago. Rust and particles released through corrosion here are transported in the water supply and end up blocking valves and seals as well as laying the foundations in our buildings for further corrosion and bacterial build up.

JUDO water treatment systems are engineered to help protect your pipe system along with all appliances and fitting attached to it, from damage ensuring a longer, more efficient and cost and environmentally effective working life.

- What is good for us humans is not always the optimal solution for our technical equipment, appliances and heaters. Depending on the water chemistry involved as well as the material these systems are made up of problems such as calcium deposits, corrosion or bacterial build up may also occur here.

JUDO's innovative systems and products keep your heater and appliances working more efficiently, and in an environmentally and more cost effective manner. Protection levels against shut downs and malfunction levels in manufacturing processes are increased thus reducing the costs of maintenance and repairs and ensuring the systems run more efficiently.

- No matter if you are a homeowner looking at his water supply or a building manager with the weight of responsibility for several families on his shoulders, drinking water hygiene should always be high on your list of priorities to look out for.

JUDO protective filters and softeners offer an ideal platform in ensuring the levels of hygiene in the water coming out of your faucets are exactly what they should be.

CONVERSION TABLES

EQUIVALENTS AND CONVERSION FACTORS			
TYPE	MULTIPLY	BY	TO OBTAIN
Area	Cubic Centimeters	0.061	Cubic inches
	Cubic inches	16.39	Cubic Centimeters
Flow rate	Liter per minute	0.2642	US gallons per minute
	US gallons per minute	3.785	Liter per minute
	Cubic meters per hour (m ³ /h)	4.403	US gallons per minute
Measurement	Millimeter (mm)	0.0393	inches
	inches	25.4	Millimeter (mm)
Pressure	Bar	14.5	Pounds per square inch (psi)
	Kilopascal (kPa)	0.145	Pounds per square inch (psi)
	Pounds per square inch (psi)	6.894	Kilopascal (kPa)
Temperature	Celsius (°C)	1.8 add 32	Fahrenheit (°F)
	Fahrenheit (°F)	Subtract 32, divide by 1.8	Celsius (°C)
Volume	Liters (ltr)	0.264	US gallon
	US gallon	3.785	Liters
Weight	Kilogram (kg)	2.2046	Pounds (lb.)
	Pounds (lb.)	0.454	Kilogram (kg)

PIPE SIZE			FILTER SIZE	
mm	inches	DN	Microns	Mesh
20	¾"	20	30	590
25	1"	25	50	297
32	1¼"	32	100	149
40	1½"	40	200	74
50	2"	50	320	45
65	2½"	65	500	35
80	3"	80		
100	4"	100		
125	5"	125		
150	6"	150		
200	8"	200		

1" = 25.40 mm

NOTE: All illustrations, dimensions and information for models in this catalog are valid on the date of printing. All rights are reserved for modifications as a result of technical progress or further product developments.

ABBREVIATIONS:

AT (Automatic Time Actuated Backwash Operation) – Backwash is activated by a time-actuated relay with adjustable range settings for 4hours/8hours/24hours/weekly/monthly. There is also a Manual override button.

ATP (Automatic Time and Pressure Differential Actuated Backwash Operation) – Electronic control system for backwash operation and alarm fault buzzer. Backwash is activated by a time-actuated relay with adjustable range settings for 4hours/8hours/24hours/weekly/monthly and pressure differential switch. There is also a Manual override button.

AUTO – Automatic backwash function.

CSA (Canadian Standards Association) registered mark – indicates that the product has been independently tested and certified to meet recognized standards for safety or performance.

DIN (German Institute for Standardization) German national organization for standardization of products.

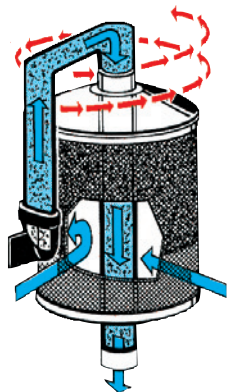
DN - Diametre Nominal, the European equivalent of Nominal Pipe Size.

DPS (Differential Pressure Switch) – device that monitors the inlet and outlet pressure of the filter and will activate a backwash cycle if the differential in pressure exceeds the set point.

M (Manual Self Cleaning Backwash Operation) – Backwash activated by manually rotating hand wheel.

PN (Pressure Nominal) - The pressure in bars that the pipe can support with water at 20 °C.

PATENTED PRODUCTS:



BACKWASH CLEANING SYSTEM

The patented point-rotation system of JUDO water filters allows for backwash cleaning without any interruption of the water supply or filtration process.



QUICK MOUNTING CONNECTION

The patented JUDO QUICKSET-E built-in rotary flange facilitates the easy installation of many JUDO devices. This forms the flange connection between the water pipe and the JUDO water treatment unit. The QUICKSET-E allows for installation for vertical or horizontal flow direction.

DON'T WELCOME RUST, GRIME AND LIME SCALE INTO YOUR HOME!

Obviously we all want our water installation system kept in the best possible working order – after all it is the packaging for our most important foodstuff: water. Damage to this systems can result in the threat of health and hygiene issues. Above and beyond that damage in a supply system which affects the quality of water provided inevitably means nerve taxing and costly repairs.

Don't run the risk! Combat the main problem causes, corrosion and lime scale, before they can get to work in your system.





JUDO FIMAT

The FIMAT, is a CSA certified self-cleaning backwash water filter engineered for the filtration of both coarse and fine grain particulates and physical impurities in water supply systems. With flow rates up to 88 gpm, and a larger screen surface, the FIMAT is well suited for use in domestic water supply, high-rise, agricultural and industrial applications. The FIMAT is available in 1½" and 2" pipe sizes with manual (M), automatic time actuated (AT) or automatic time and pressure differential actuated (ATP) backwash operation.



Type JFXL-M 1½" - 2"



Type JFXL-AT 1½" - 2"



Type JFXL-ATP 1½" - 2"

Specifications:

- ✓ For cold water applications to a maximum water temperature of 30 °C (86 °F)
- ✓ Water pressure between 22 - 145 psi.
- ✓ No cartridge replacement required!
- ✓ Upper housing made of high-grade polymer-based materials; bottom housing made of high-grade cast iron coated with Rilsan®.
- ✓ Patented quick-mounting device for easy installation in both horizontal and vertical flow direction.
- ✓ Manual (M) backwash by rotating top hand wheel.
- ✓ Backwash process using JUDO's patented point rotation system without interruption to the water supply or filtration process.
- ✓ Equipped with clear sight-glass to monitor degree of dirt build-up and view backwash functions.
- ✓ Simultaneous cleaning of the sight-glass during backwash process.
- ✓ Threaded connection to ANSI B1.20.1
- ✓ Filtration through 100 micron stainless steel sieve (also available in 30, 320 and 500 microns).

Additional specifications for AT and ATP Filters

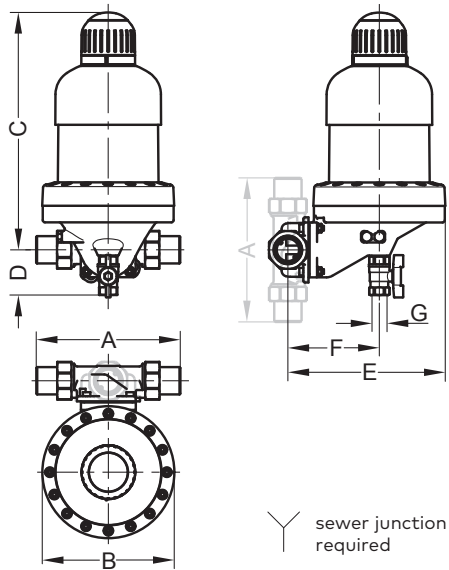
- ✓ Electronic control system with LED display indicators for operation, alarm fault buzzer and manual over-ride button for backwash start-up.
- ✓ Automated backwash generated by a time actuated relay (AT, ATP) with available settings 4 hours/8 hours/24 hours/weekly/monthly.
- ✓ Differential pressure control setting adjustable from 0.9 - 9 psi (ATP only).
- ✓ 120/24 VAC plug-in transformer (21 VA), 3-prong duplex box outlet required.
- ✓ Run backwash flush connection to nearest hub drain using an indirect connection.
- ✓ Equipped with 2 (two) potential-free output dry contact remote transmissions for building automation system. Maximum load current 1A; Maximum switching voltage 24 V.

Technical Data

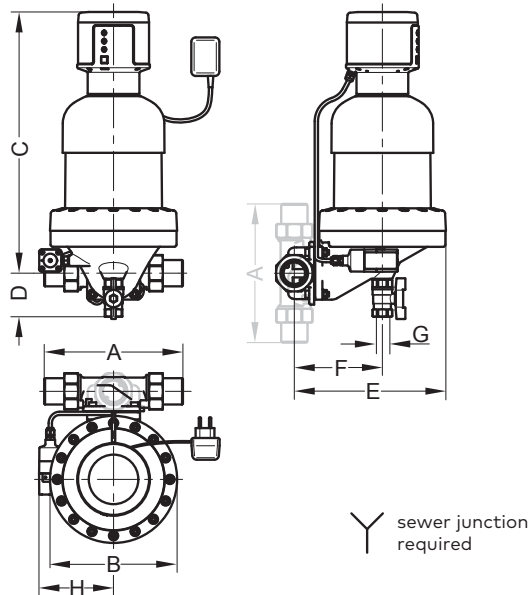
Type	JFXL-M	JFXL-M	JFXL-AT	JFXL-AT	JFXL-ATP	JFXL-ATP
Pipe Size	1½"	2"	1½"	2"	1½"	2"
Max. flow rate m³/h (gpm)	20 (88)	20 (88)	20 (88)	20 (88)	20 (88)	20 (88)
Min./Max. operating pressure psi (kPa)	22 - 145 (150 - 1000)	22 - 145 (150 - 1000)	22 - 145 (150 - 1000)	22 - 145 (150 - 1000)	22 - 145 (150 - 1000)	22 - 145 (150 - 1000)
Pressure loss after backwash psi (kPa)	2.9 (20)	2.9 (20)	2.9 (20)	2.9 (20)	2.9 (20)	2.9 (20)
Standard mesh size mm (microns) *	0.1 (100)	0.1 (100)	0.1 (100)	0.1 (100)	0.1 (100)	0.1 (100)
Max. ambient and water temperature °C (°F)	30 (86)	30 (86)	30 (86)	30 (86)	30 (86)	30 (86)
Power supply V/Hz	120/60	120/60	120/60	120/60	120/60	120/60
Weight approximate kgs (lbs)	17.5 (38.5)	18.8 (41.4)	18.4 (40.5)	19.7 (43.4)	18.8 (41.4)	20.1 (44.3)
Order number	8020266	8020267	8020271	8020272	8020275	8020230

* also available in 30, 320 and 500 microns sieves

Installation Dimensions



Type JFXL-M 1½" - 2"



Type JFXL-ATP 1½" - 2"

Type	JFXL-M	JFXL-M	JFXL-AT	JFXL-AT	JFXL-ATP	JFXL-ATP
Pipe Size	1½"	2"	1½"	2"	1½"	2"
A Installation length mm (inches)	252 (9.9)	280 (11.0)	252 (9.9)	280 (11.0)	252 (9.9)	280 (11.0)
B Unit width mm (inches)	231 (9.1)	231 (9.1)	231 (9.1)	231 (9.1)	231 (9.1)	231 (9.1)
C Height above pipe centre mm (inches)	416 (16.4)	416 (16.4)	475 (18.7)	475 (18.7)	475 (18.7)	475 (18.7)
D Height below pipe centre mm (inches)	80 (3.1)	80 (3.1)	80 (3.1)	80 (3.1)	80 (3.1)	80 (3.1)
E Depth up to pipe centre mm (inches)	276 (10.9)	284 (11.2)	276 (10.9)	284 (11.2)	276 (10.9)	284 (11.2)
F Waste water connection centre to pipe centre mm (inches)	160 (6.3)	168 (6.6)	160 (6.3)	168 (6.6)	160 (6.3)	168 (6.6)
G Connection dimension waste water inches	¾"	¾"	¾"	¾"	¾"	¾"
H Width differential pressure switch to pipe centre mm (inches)	-	-	-	-	136 (5.4)	136 (5.4)
Order number	8020266	8020267	8020271	8020272	8020275	8020230

JUDO PROFI and PROFIMAT (Manual version)

JUDO's PROFI and PROFIMAT series were the first self-cleaning backwash point-of-entry water filtration systems of their kind to receive CSA and NSF 61 approval and certification for domestic potable water supplies in North America!

The PROFI allows water to flow and filter through a stainless steel sieve, which traps and retains coarse and fine grain particulates and physical impurities until the backwash is initiated. During backwash, there is NO interruption to the building's water supply or to the filtration process. Due to the working principals of the patented backwash point-rotation system water continues to be filtered even during a backwash cycle. The PROFI has a Manual (M) backwash operation and is available in pipe sizes ranging from ¾" to 8".

Specifications:

- ✓ For cold water applications up to a maximum water temperature of 30 °C (86 °F).
- ✓ Water pressure between 22 - 145 psi (3" - 8"), 22 - 232 psi (¾" - 2½").
- ✓ No cartridge replacement necessary!
- ✓ Upper housing made of high-grade polymer based materials and bottom housing made of high-grade cast-iron coated with Rilsan®.
- ✓ Patented quick-mounting device for easy pipe installation. Vertical and horizontal pipe installation for sizes ¾" – 2"; horizontal pipe only for sizes 2½" – 8".
- ✓ Backwash process using JUDO's patented point-rotation-system without interruption to the water supply or filtration process.
- ✓ Equipped with a clear sight-glass to view filtration, direct build-up and backwash functions.
- ✓ Simultaneous cleaning of sight-glass during backwash process.
- ✓ Threaded connection (¾" to 2") according to ASME/ANSI B1.20.1. Flanged connection (3" to 8") according to ASME/ANSI B16.1.
- ✓ Run backwash flush connection to nearest hub drain using an indirect connection.
- ✓ Manual backwash by rotating top hand wheel.
- ✓ Battery powered (AAA x 2) audible backwash reminder alarm (¾" – 1¼" models only).
- ✓ Filtration through 100 micron stainless screen filter screen (also available in 30, 320 and 500 microns).



Type JPF ¾" - 1¼"

Type JPF 2"

Type JPF 3"

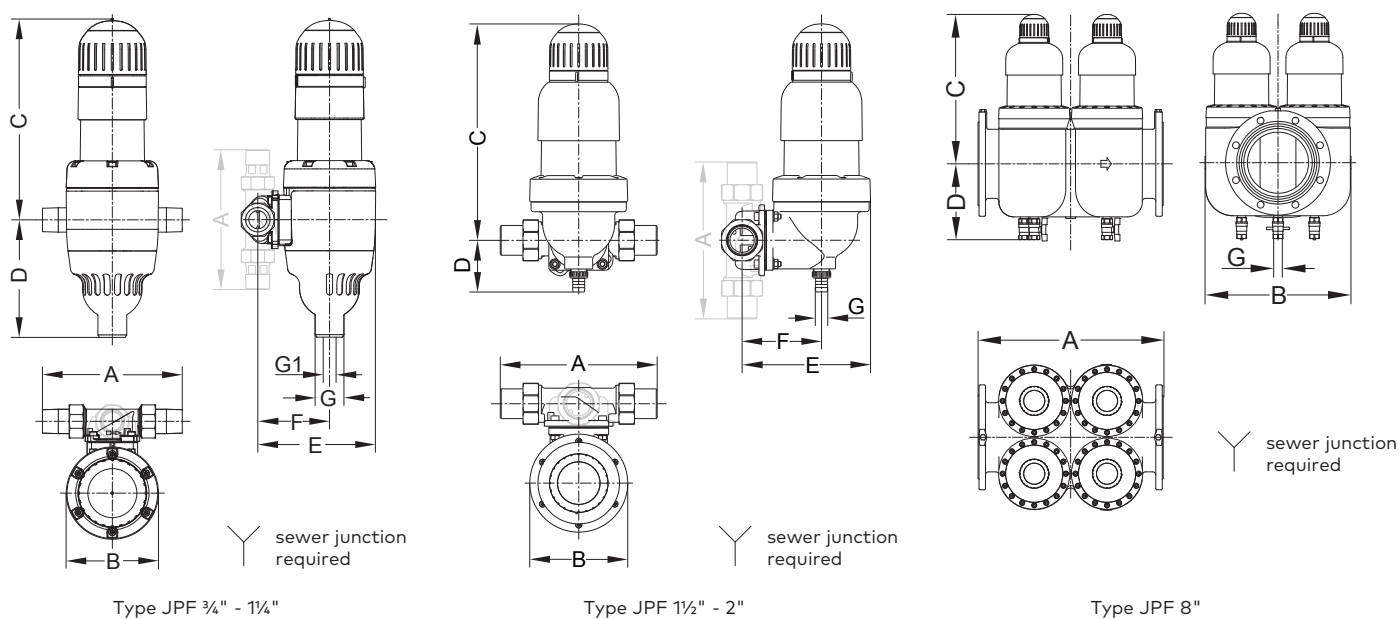


Type JPF 8"

Technical Data

Type	JPF	JPF	JPF	JPF	JPF	JPF	JPF	JPF	JPF	JPF	JPF
Pipe Size	¾"	1"	1¼"	1½"	2"	2½"	3"	4"	5"	6"	8"
Max. flow rate m³/h (gpm)	4 (17.5)	4.5 (20)	5.5 (24)	13 (57)	16 (70)	25 (110)	50 (220)	60 (264)	100 (440)	150 (660)	200 (880)
Min./Max. operating pressure psi (kPa)	22 - 232 (150 - 1600)	22 - 232 (150 - 1600)	22 - 232 (150 - 1600)	22 - 232 (150 - 1600)	22 - 232 (150 - 1600)	22 - 232 (150 - 1600)	22 - 145 (150 - 1000)	22 - 145 (150 - 1000)	22 - 145 (150 - 1000)	22 - 145 (150 - 1000)	22 - 145 (150 - 1000)
Pressure loss after backwash psi (kPa)	2.9 (20)	2.9 (20)	2.9 (20)	2.9 (20)	2.9 (20)	2.9 (20)	2.9 (20)	2.9 (20)	2.9 (20)	2.9 (20)	2.9 (20)
Standard mesh size mm (microns)	0.1 (100)	0.1 (100)	0.1 (100)	0.1 (100)	0.1 (100)	0.1 (100)	0.1 (100)	0.1 (100)	0.1 (100)	0.1 (100)	0.1 (100)
Max. ambient temperature °C (°F)	30 (86)	30 (86)	30 (86)	30 (86)	30 (86)	30 (86)	30 (86)	30 (86)	30 (86)	30 (86)	30 (86)
Max. water temperature °C (°F)	30 (86)	30 (86)	30 (86)	30 (86)	30 (86)	30 (86)	30 (86)	30 (86)	30 (86)	30 (86)	30 (86)
Weight approximate kg (lbs)	4 (8.8)	4 (8.8)	4 (8.8)	9 (19.8)	10 (22)	15 (33.1)	29 (63.9)	31 (68.3)	84 (185)	137 (302)	185 (408)
Order No.	8010110	8010111	8010135	8010136	8010137	8010138	8010117	8010139	8290015	8290016	8290017

Installation Dimensions



Type	JPF	JPF	JPF	JPF	JPF	JPF	JPF	JPF	JPF	JPF	JPF
Pipe Size	¾"	1"	1¼"	1½"	2"	2½"	3"	4"	5"	6"	8"
A Installation length mm (inches)	180 (7.0)	195 (7.5)	230 (9.0)	252 (9.9)	280 (11.0)	240 (9.5)	320 (12.6)	320 (12.6)	560 (22.0)	560 (22.0)	600 (23.6)
B Unit width mm (inches)	130 (5.2)	130 (5.2)	130 (5.2)	158 (6.2)	158 (6.2)	185 (7.3)	231 (9.1)	231 (9.1)	250 (9.8)	468 (18.4)	469 (18.5)
C Height above pipe centre mm (inches)	280 (11.0)	280 (11.0)	280 (11.0)	348 (13.7)	348 (13.7)	350 (13.8)	419 (16.5)	426 (16.8)	446 (17.6)	469 (18.5)	485 (19.1)
D Height below pipe centre mm (inches)	165 (6.5)	165 (6.5)	165 (6.5)	84 (3.3)	97 (3.3)	163 (6.4)	172 (6.8)	182 (7.2)	197 (7.8)	215 (8.5)	246 (9.7)
E Depth up to pipe centre mm (inches)	165 (6.5)	165 (6.5)	170 (6.7)	207 (8.1)	213 (8.4)	-	-	-	-	-	-
F Connection dimension residual water mm (inches)	100 (3.9)	100 (3.9)	105 (4.1)	128 (5.0)	136 (5.3)	-	-	-	-	-	-
G Connection dimension waste water mm (inches)	40 (1.5)	40 (1.5)	40 (1.5)	20 (0.8)	20 (0.8)	¾"	¾"	¾"	¾"	¾"	¾"
G1 Connection dimension waste water (alternate) mm (inches)	14 (0.5)	14 (0.5)	14 (0.5)	-	-	-	-	-	-	-	-
Order No.	8010110	8010111	8010135	8010136	8010137	8010138	8010117	8010139	8290015	8290016	8290017



JUDO PROFIMAT-AT (Automatic version, time controlled) and JUDO PROFIMAT-ATP (Automatic version, time and differential pressure controlled)

JUDO's PROFI and PROFIMAT series were the first self-cleaning backwash point-of-entry water filtration systems of their kind to receive CSA and NSF 61 approval and certification for domestic potable water supplies in North America!

The PROFIMAT is available in with two different backwash operation systems Automatic Time Actuated (AT) or Automatic Time and Pressure Differential Actuated (ATP). Both versions allow water to flow and filter through a stainless steel sieve, which traps and retains coarse and fine grain particulates and physical impurities until the backwash is initiated. During backwash, there is NO interruption to the building's water supply or to the filtration process due to the working principals of the patented backwash point-rotation-system allowing water to be filtered even during a backwash cycle. The PROFIMAT is available in pipe sizes ranging from ¾" to 8".



Type JPF-AT ¾" - 1¼"



Type JPF-AT 1½" - 2"



Type JPF-ATP 4"



Type JPF-ATP 8"

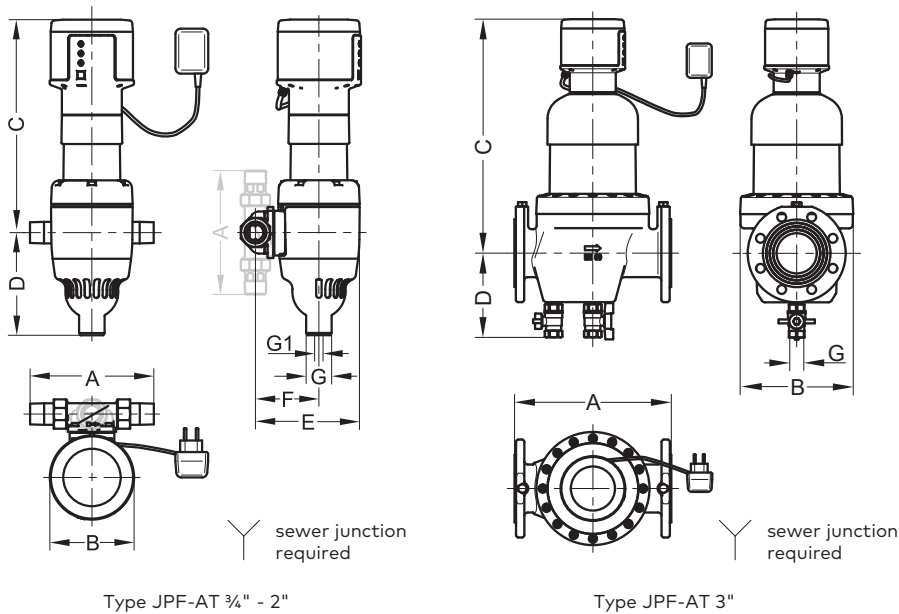
Specifications:

- ✓ For cold water applications up to a maximum water temperature of 30 °C (86 °F).
 - ✓ Water pressure between 22 - 145 psi (¾" - 8"), 22 - 232 psi (¾" - 2½").
 - ✓ No cartridge replacement necessary!
 - ✓ Upper housing made of high-grade polymer based materials and bottom housing made of high-grade cast-iron coated with Rilsan®.
 - ✓ Patented quick-mounting device for easy pipe installation. Vertical and horizontal pipe installation for sizes ¾" - 2"; horizontal pipe only for sizes 2½" - 8".
 - ✓ Backwash process using JUDO's patented point-rotation-system without interruption to the water supply or filtration process.
 - ✓ Equipped with a clear sight-glass to view filtration, direct build-up and backwash functions.
 - ✓ Simultaneous cleaning of sight-glass during backwash process.
 - ✓ Threaded connection (¾" to 2") according to ASME/ANSI B1.20.1. Flanged connection (3" to 8") according to ASME/ANSI B16.1.
 - ✓ Run backwash flush connection to nearest hub drain using an indirect connection.
 - ✓ Automatic backwash generated by a time actuated relay (AT, ATP) with adjustable range settings for 4 hours/8 hours/24 hours/weekly/monthly. Able to set range on 5" - 8" units from 1 hour - 2,000 hours.
 - ✓ Adjustable differential pressure control setting with M override button (ATP). For pipe sizes ¾" - 4" settings 0.9 - 9 psi; pipe sizes 5" - 8" settings 0 - 36 psi.
 - ✓ Electronic control with LED display indicators for operation, alarm fault buzzer and manual over-ride button for backwash start-up.
 - ✓ 3-prong duplex box outlet with GFI required for plug-in transformer.
 - ✓ Filtration through 100 micron stainless screen filter screen (also available in 30, 320 and 500 microns).
- JPF-ATP 5" - 8":
- ✓ Filter is equipped with two potential-free output dry contact remote transmissions for building automation systems. Maximum load current 1A; Maximum switching voltage 24 V.

Technical Data

Type	JPF-AT	JPF-AT	JPF-AT	JPF-AT	JPF-AT	JPF-AT	JPF-AT	JPF-AT
Pipe Size	¾"	1"	1¼"	1½"	2"	2½"	3"	4"
Max. flow rate m³/h (gpm)	4 (17.5)	4.5 (20)	5.5 (24)	13 (57)	16 (70)	25 (110)	50 (220)	60 (264)
Min./Max. operating pressure psi (kPa)	22 - 232 (150 - 1600)	22 - 232 (150 - 1600)	22 - 232 (150 - 1600)	22 - 232 (150 - 1600)	22 - 232 (150 - 1600)	22 - 232 (150 - 1600)	22 - 145 (150 - 1000)	22 - 145 (150 - 1000)
Pressure loss after backwash psi (kPa)	2.9 (20)	2.9 (20)	2.9 (20)	2.9 (20)	2.9 (20)	2.9 (20)	2.9 (20)	2.9 (20)
Standard mesh size mm (microns)	0.1 (100)	0.1 (100)	0.1 (100)	0.1 (100)	0.1 (100)	0.1 (100)	0.1 (100)	0.1 (100)
Max. ambient temperature °C (°F)	30 (86)	30 (86)	30 (86)	30 (86)	30 (86)	30 (86)	30 (86)	30 (86)
Max. water temperature °C (°F)	30 (86)	30 (86)	30 (86)	30 (86)	30 (86)	30 (86)	30 (86)	30 (86)
Weight approximate kg (lbs)	4.2 (9.3)	4.4 (9.7)	4.9 (10.8)	10.2 (22.5)	11.5 (25.4)	16.5 (36.4)	30.0 (66.1)	33.5 (73.9)
Order No.	8020218	8020219	8020268	8020269	8020270	8025031	8025032	8025033

Installation Dimensions

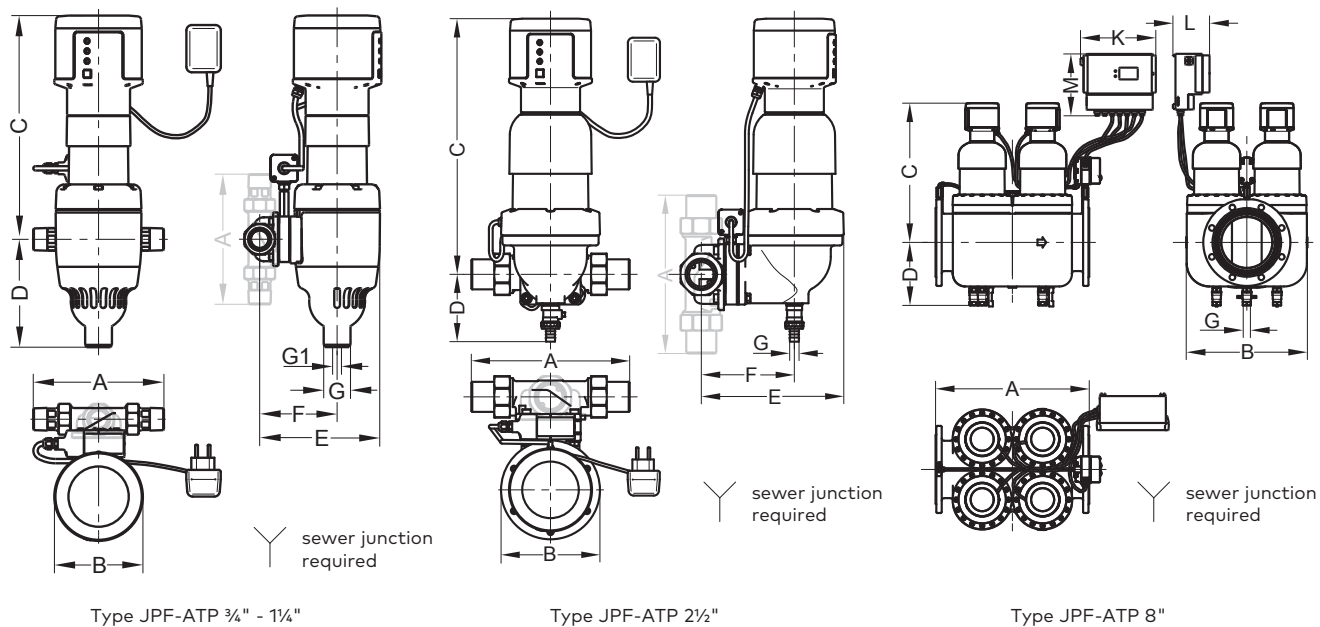


Type	JPF-AT	JPF-AT	JPF-AT	JPF-AT	JPF-AT	JPF-AT	JPF-AT	JPF-AT
Pipe Size	¾"	1"	1¼"	1½"	2"	2½"	3"	4"
A Installation length mm (inches)	180 (7.0)	195 (7.8)	230 (9.0)	252 (9.9)	280 (11.0)	240 (9.5)	320 (12.6)	320 (12.6)
B Unit width mm (inches)	133 (5.2)	133 (5.2)	133 (5.2)	158 (6.2)	158 (6.2)	185 (7.3)	231 (9.1)	231 (9.1)
C Height above pipe centre mm (inches)	335 (13.2)	335 (13.2)	335 (13.2)	407 (16.0)	407 (16.0)	414 (16.3)	478 (18.8)	487 (19.2)
D Height below pipe centre mm (inches)	165 (6.5)	165 (6.5)	165 (6.5)	84 (3.3)	84 (3.3)	163 (6.4)	172 (6.8)	182 (7.2)
E Depth up to pipe centre mm (inches)	164 (6.5)	164 (6.5)	164 (6.5)	207 (8.1)	215 (8.5)	-	-	-
F Waste water connection up to the pipe middle mm (inches)	100 (3.9)	100 (3.9)	105 (4.1)	128 (5.0)	135 (5.3)	-	-	-
G Waste water nominal diameter mm (inches)	40 (1.5)	40 (1.5)	40 (1.5)	20 (0.8)	20 (0.8)	¾"	¾"	¾"
G1 Waste water nominal diameter (alternative) mm (inches)	14 (0.5)	14 (0.5)	14 (0.5)	-	-	-	-	-
Order No.	8020218	8020219	8020268	8020269	8020270	8025031	8025032	8025033

Technical Data

Type	JPF-ATP	JPF-ATP	JPF-ATP	JPF-ATP	JPF-ATP	JPF-ATP	JPF-ATP	JPF-ATP	JPF-ATP	JPF-ATP	JPF-ATP
Pipe Size	¾"	1"	1¼"	1½"	2"	2½"	3"	4"	5"	6"	8"
Max. flow rate m³/h (gpm)	4 (17.5)	4.5 (20)	5.5 (24)	13 (57)	16 (70)	25 (110)	50 (220)	60 (264)	100 (440)	150 (660)	200 (880)
Min./Max. operating pressure psi (kPa)	22 - 232 (150 - 1600)	22 - 232 (150 - 1600)	22 - 232 (150 - 1600)	22 - 232 (150 - 1600)	22 - 232 (150 - 1600)	22 - 232 (150 - 1600)	22 - 145 (150 - 1000)	22 - 145 (150 - 1000)	22 - 145 (150 - 1000)	22 - 145 (150 - 1000)	22 - 145 (150 - 1000)
Pressure loss after backwash psi (kPa)	2.9 (20)	2.9 (20)	2.9 (20)	2.9 (20)	2.9 (20)	2.9 (20)	2.9 (20)	2.9 (20)	2.9 (20)	2.9 (20)	2.9 (20)
Standard mesh size mm (microns)	0.1 (100)	0.1 (100)	0.1 (100)	0.1 (100)	0.1 (100)	0.1 (100)	0.1 (100)	0.1 (100)	0.1 (100)	0.1 (100)	0.1 (100)
Max. ambient temperature °C (°F)	30 (86)	30 (86)	30 (86)	30 (86)	30 (86)	30 (86)	30 (86)	30 (86)	30 (86)	30 (86)	30 (86)
Max. water temperature °C (°F)	30 (86)	30 (86)	30 (86)	30 (86)	30 (86)	30 (86)	30 (86)	30 (86)	30 (86)	30 (86)	30 (86)
Weight approximate kg (lbs)	4.9 (10.8)	5.0 (11.0)	5.6 (12.3)	11.0 (24.0)	12.0 (26.5)	17.5 (38.6)	30.5 (67.2)	34.0 (75.0)	95 (210)	145 (320)	200 (441)
Order No.	8020220	8020221	8020273	8020243	8020274	8025029	8020210	8020211	8320016	8025025	8320015

Installation Dimensions



Type	JPF-ATP	JPF-ATP	JPF-ATP	JPF-ATP	JPF-ATP	JPF-ATP	JPF-ATP	JPF-ATP	JPF-ATP	JPF-ATP	JPF-ATP
Pipe Size	¾"	1"	1¼"	1½"	2"	2½"	3"	4"	5"	6"	8"
A Installation length mm (inches)	180 (7.0)	195 (7.8)	230 (9.0)	252 (9.9)	280 (11.0)	240 (9.5)	320 (12.6)	320 (12.6)	560 (22.0)	560 (22.0)	600 (23.6)
B Unit width mm (inches)	133 (5.2)	133 (5.2)	133 (5.2)	158 (6.2)	158 (6.2)	185 (7.3)	231 (9.1)	231 (9.1)	250 (9.8)	468 (18.4)	473 (18.6)
C Height above pipe centre mm (inches)	335 (13.2)	335 (13.2)	335 (13.2)	407 (16.0)	407 (16.0)	414 (16.3)	478 (18.8)	487 (19.2)	505 (20.0)	529 (20.8)	544 (21.4)
D Height below pipe centre mm (inches)	165 (6.5)	165 (6.5)	165 (6.5)	84 (3.3)	84 (3.3)	163 (6.4)	172 (6.8)	182 (7.2)	197 (7.8)	215 (8.5)	246 (9.7)
E Depth up to pipe centre mm (inches)	181 (7.1)	181 (7.1)	181 (7.1)	227 (8.9)	235 (9.2)	-	-	-	100 (4.0)	100 (4.0)	100 (4.0)
F Connection dimension residual water mm (inches)	117 (4.6)	117 (4.6)	117 (4.6)	148 (5.8)	156 (6.1)	-	-	-	105 (4.2)	105 (4.2)	105 (4.2)
G Connection dimension waste water mm (inches)	40 (1.5)	40 (1.5)	40 (1.5)	20 (0.8)	20 (0.8)	¾"	¾"	¾"	¾"	¾"	¾"
G1 Connection dimension waste water (alternate) mm (inches)	14 (0.5)	14 (0.5)	14 (0.5)	-	-	-	-	-	-	-	-
K Control unit width mm (inches)	-	-	-	-	-	-	-	-	300 (11.8)	300 (11.8)	300 (11.8)
L Control unit depth mm (inches)	-	-	-	-	-	-	-	-	160 (6.3)	160 (6.3)	160 (6.3)
M Control unit height mm (inches)	-	-	-	-	-	-	-	-	250 (9.8)	250 (9.8)	250 (9.8)
Order No.	8020220	8020221	8020273	8020243	8020274	8025029	8020210	8020211	8320016	8025025	8320015



Drinking Water
NSF/ANSI 42 & 53/CSA B483

JUDO PURE@TAP

More quality of life with purified water.

The PURE@TAP drinking water system provides peace-of-mind so that you and your family can enjoy clean filtered water for all your drinking and cooking needs. Simultaneously using the system will eliminate the need to purchase, carry, store and recycle plastic water bottles; thus reducing the impact on environmental and save you money. The PURE@TAP drinking water system provides a higher quality and more reliable source of clean filtered water compared to pour-through pitchers or faucet filters.

Specifications:

- ✓ Filtration without chemical additives
- ✓ Noticeably improving the taste
- ✓ Eliminates unpleasing odour
- ✓ Removes harmful materials, bacteria and germs up to 99,99 %
- ✓ The minerals are maintained in the water
- ✓ Easy installation under sink
- ✓ Filter replacement only every 4 - 6 months *
- ✓ Space saving design
- ✓ Optional overflow attachment

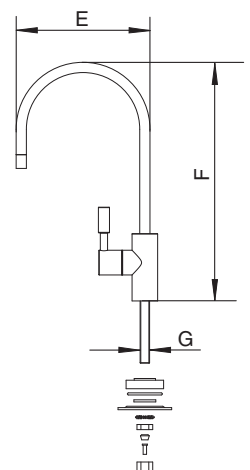
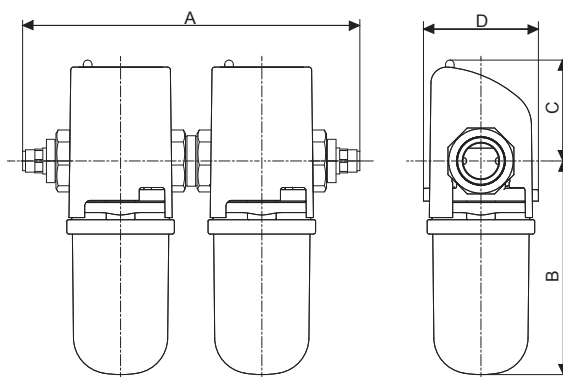
* depends on water quality and flow rate

Technical data

Type	PURE@TAP
Pipe Size	3/8"
Flow Rate	2 lpm (0.53 gpm)
Water Pressure (min. / max.)	15 psi / 50 psi
Water temperature range	1° C (34 °F) 30 °C (86 °F)
Standard membrane	0.2 micron
Total capacity of cartridges **	2000 litres (528 gal.)
Order No.	8115012

** Recommended cartridge replacement: 4 - 6 months depending on water quality and consumption.

System	A	B	C	D
PURE@TAP	240 mm	145 mm	72 mm	81 mm
8115012	(9.5 inch)	(5.7 inch)	(2.8 inch)	(3.2 inch)
Faucet	E	F	G	
8115019,	157 mm	280 mm	11 mm	
8115022	(6.1 inch)	(11 inch)	(0.43 inch)	



HEATING WATER SHOULD ONLY TRANSPORT ONE THING: HEAT.

Our standard drinking water supply is not the best of mediums for heat transfer applications. Air, grit, sand and rust particles carried into the loop with the water supply result in increased energy consumption, noise within the system and damage to the heat exchangers and circulation pumps.

Damage caused in the systems is often not apparent until it is too late so it is definitely a case of being safe, not sorry here!

JUDO FERROCLEAN

Deposits of iron sludge (magnetite) that occur in heating and cooling systems can cause system breakdowns resulting in higher energy consumption and increased maintenance costs.

Magnetic suspended iron sludge is trapped in the system via the use of high-performance magnet rod assemblies. The sludge is removed by deactivating the magnets and performing a simple wash-down/rinse-out process. An additional integrated magnesium anode rod ensures that any oxygen in the heat transfer fluid is bound aiding in the corrosion inhibition process. A simple wash-down/rinse-out process occurs when the magnetic rod is removed from its protective sleeve.

When the FERROCLEAN is installed directly upstream from the system that you wish to protect (e.g. boiler, heat exchangers or refrigeration unit) optimal results are achieved.

The FERROCLEAN is environmentally friendly, sustainable design, simple operation and has no moving parts.

Specifications:

- ✓ For use in heating and cooling systems with a water temperature range from 6 °C (43 °F) up to 110 °C (230 °F).
- ✓ Maximum water pressure of 150 psi (1034 kPa).
- ✓ No filter to replace.
- ✓ Accommodates system pipe diameters from 2½" – 8".
- ✓ Housing made of high-grade welded steel complete with flanged connections and floor mounted supports.
- ✓ One (1) integrated automatic air-venting valve to allow removal of harmful gases.
- ✓ One (1) magnesium anode.
- ✓ Installation inline or side stream, dependent on the operation.
- ✓ Equipped with a 25 mm (1") valve connection for wash-down/rinse-out discharge and ½" hose-bib threaded valve connection for raw-water make-up and/or optional Wash-down/Rinse-out water supply.
- ✓ Wash-down/Rinse-out by way of intrinsic water or by way of integrated raw water.
- ✓ Flanged connections according to ASME/ANSI B16.1.
- ✓ Optional insulation jacket available to provide maximum energy efficiency.

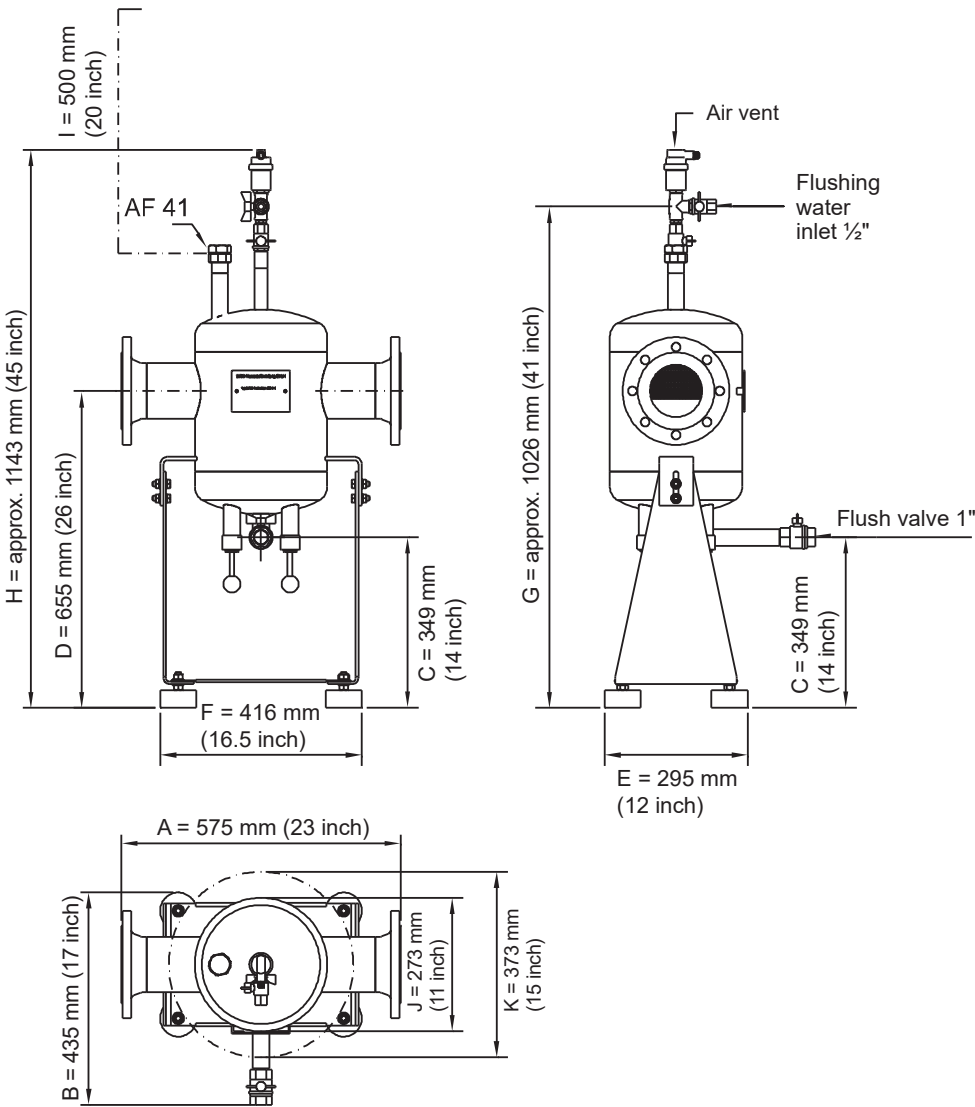


Type JFS

Technical Data

Type	JFS	JFS	JFS	JFS	JFS
Pipe Size	2½"	3"	4"	6"	8"
Max. flow rate m³/hr (gpm)	12 (52.8)	17 (74.8)	30 (132.1)	80 (352.2)	130 (572.4)
Maximum operating pressure psi (kPa)	150 (1034)	150 (1034)	150 (1034)	150 (1034)	150 (1034)
Pressure loss psi (kPa)	0.02 (0.12)	0.03 (0.18)	0.03 (0.22)	0.06 (0.40)	0.07 (0.50)
Max. operating temperature °C (°F)	110 (230)	110 (230)	110 (230)	110 (230)	110 (230)
Weight approximate kgs (lbs)	42 (92.6)	46 (101.4)	48 (105.8)	58 (127.9)	62 (136.7)
Order number	8055070	8055071	8055072	8055074	8055075
Order number Insulation jacket	8057501	8057502	8057503	8057505	8057506

Installation Dimensions



JUDO HEIFI-TOP

Modern heating systems work with increasingly improved degrees of effectiveness. However, the new systems are also more and more sensitive when it comes to the quality of the water circulating in the system. Magnetic particles, for instance, are a major problem for heating systems.

The HEIFI-TOP backwash sediment filter traps and retains suspended impurities and particulates in heating and cooling systems. Simultaneously, the system removes oxygen via an integrated air separator and releases it through a built-in automatic air-venting valve that operates without the use of chemicals!

The HEIFI-TOP is environmentally friendly and easy to operate. A regular backwash eliminates trapped impurities in the unit while the system continues to perform its functions. The result? Improved heat transfer, reduced risk of corrosion and premature failure of system components such as piping, fittings, valves, regulators and pumps.

HEIFI-TOP is available in pipes sizes from $\frac{3}{4}$ " to 2".



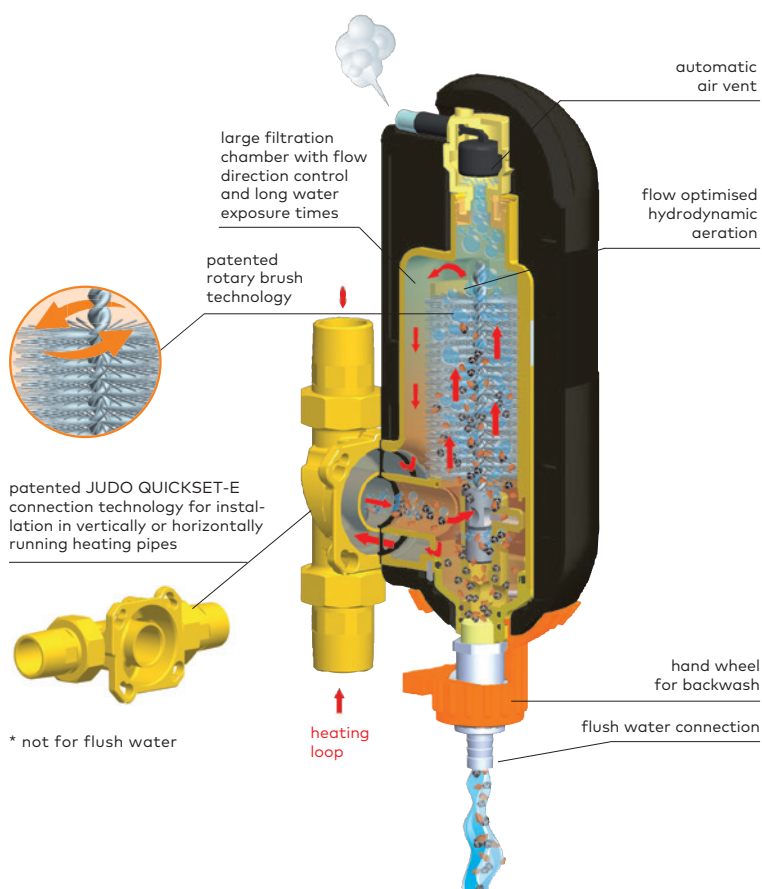
Type JHF-T $\frac{3}{4}$ " - 1 $\frac{1}{4}$ "

Specifications:

- ✓ For use in heating and cooling systems up to a water temperature of 90 °C (194 °F).
- ✓ Water pressure between 22 - 145 psi.
- ✓ Housing made of high-grade brass.
- ✓ Filter element and air separator made of stainless steel.
- ✓ Backwash assembly made of polymer based materials.
- ✓ Styrofoam shell covering for insulation.
- ✓ Permanent cylindrical brush constructed of 10,000 stainless steel bristles.
- ✓ Equipped with an automatic air-venting device and hand valve to select operation and/or backwash positions.
- ✓ A patented quick-mount device for easy installation in both horizontal and vertical flow directions.
- ✓ Threaded connection according to ASME/ANSI B1.20.1.



Type JHF-T 1 $\frac{1}{2}$ " - 2"

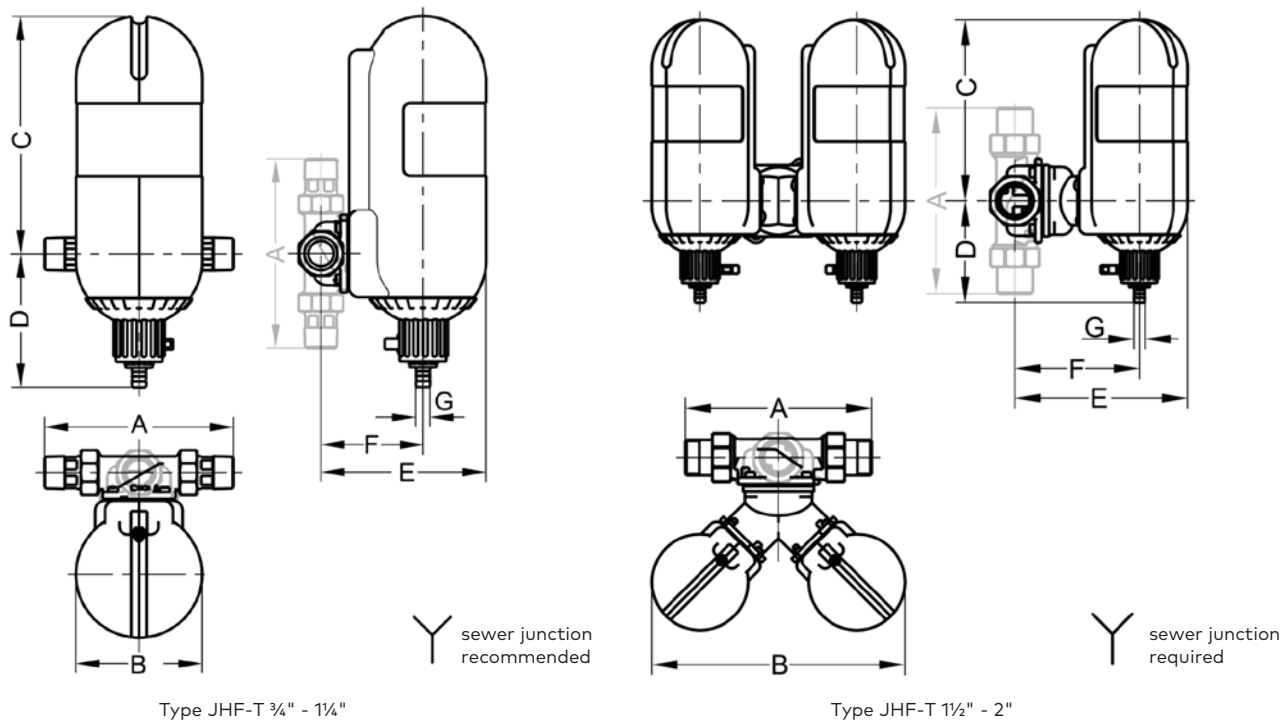


Technical Data

Type	JHF-T	JHF-T	JHF-T	JHF-T	JHF-T
Pipe Size	¾" *	1"	1¼"	1½" **	2" **
Max. flow rate m³/h (gpm)	2.0 (8.8)	3.0 (13.2)	4.0 (17.6)	6.0 (26.5)	8.0 (35.2)
Min. / Max. operating pressure psi (kPa)	22 - 145 (150 - 1000)	22 - 145 (150 - 1000)	22 - 145 (150 - 1000)	22 - 145 (150 - 1000)	22 - 145 (150 - 1000)
Pressure loss after backwash psi (kPa)	0.9 (6.0)	1.5 (10.0)	2.6 (18.0)	1.5 (10.0)	2.6 (18.0)
Max. water temperature °C (°F)	90 (194)	90 (194)	90 (194)	90 (194)	90 (194)
Weight approximate kgs (lbs)	4.9 (10.8)	5.0 (11.0)	5.5 (12.1)	13.5 (29.8)	14.7 (32.0)
Order No.	8060053	8060054	8060055	8060056	8060057

* JHF-T 1" with ¾" QUICKSET-E ** 2 JHF-T 1" or 1¼" with parallel fitted rotary flange

Installation Dimensions



Type	JHF-T	JHF-T	JHF-T	JHF-T	JHF-T
Pipe Size	¾"	1"	1¼"	1½"	2"
A Installation length mm (inches)	180 (7.1)	195 (7.7)	230 (9.1)	280 (11.0)	280 (11.0)
B Unit width mm (inches)	130 (5.1)	130 (5.1)	130 (5.1)	342 (13.5)	342 (13.5)
C Height above pipe center mm (inches)	245 (9.6)	245 (9.6)	245 (9.6)	245 (9.6)	245 (9.6)
D Height below pipe center mm (inches)	138 (5.4)	138 (5.4)	138 (5.4)	138 (5.4)	138 (5.4)
E Depth to pipe center mm (inches)	170 (6.7)	170 (6.7)	175 (6.9)	234 (9.2)	242 (9.5)
F Waste water connection center to pipe center mm (inches)	105 (4.1)	105 (4.1)	110 (4.3)	169 (6.7)	177 (7.0)
G Connection dimension for waste water mm (inches)	15 (0.6)	15 (0.6)	15 (0.6)	15 (0.6)	15 (0.6)
Order No.	8060053	8060054	8060055	8060056	8060057

JUDO MAFI

Modern heating systems work with increasingly improved degrees of effectiveness. However, the new systems are also more and more sensitive when it comes to the quality of the water circulating in the system. Magnetic particles, for instance, are a major problem for heating systems.

In particular, high-efficiency pumps, for the construction of which permanent magnets are used, attract magnetite sludge and magnetic shavings.

The JUDO MAFI Magnetite Filter removes particles by means of an optimised separation process – an efficient combination of centrifugal separation and the power of three high-performance magnets. In this way, magnetic and non-magnetic particles are reliably separated – and heating systems are protected in the best possible way.



Type MAFI ¾" - 1¼"

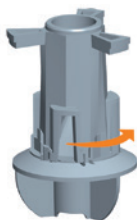
Specifications:

- ✓ For use in heating systems up to a water temperature of 90 °C (194 °F).
- ✓ Water pressure between 14.5 - 87 psi.
- ✓ Styrofoam shell covering for insulation.
- ✓ Centrifugal and magnetic separator.
- ✓ A patented quick-mount device for easy installation in both horizontal and vertical flow directions.
- ✓ Threaded connection according to ASME/ANSI B1.20.1.
- ✓ No filter to replace
- ✓ Equipped with an automatic air venting device.
- ✓ Casing in high-grade, heat-resistant PVC.

THE BENEFITS OF JUDO MAFI

Centrifugal separation

The inside of the filter is equipped with a sophisticated and flow-optimised insert setting the water in rotation. Like in a centrifuge, the dirt particles are outwardly discharged and sink to the bottom of the housing on the inner wall. In the lower area, the particles accumulate and can simply be rinsed. Due to well-conceived fluid mechanics, the differential pressure continuously remains low – even when larger amounts of dirt have already been separated.

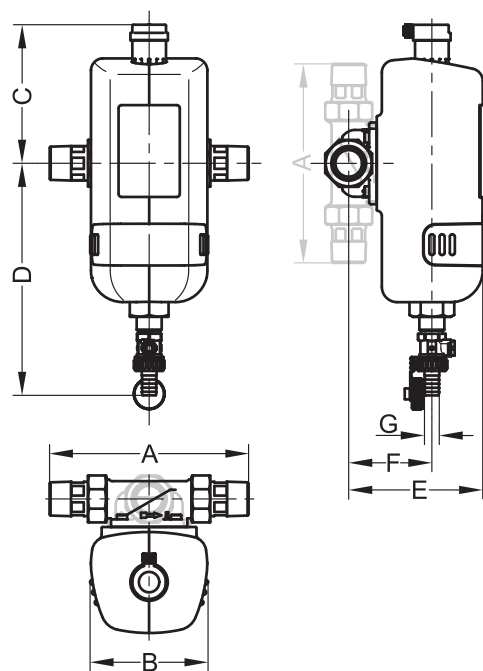


Technical Data

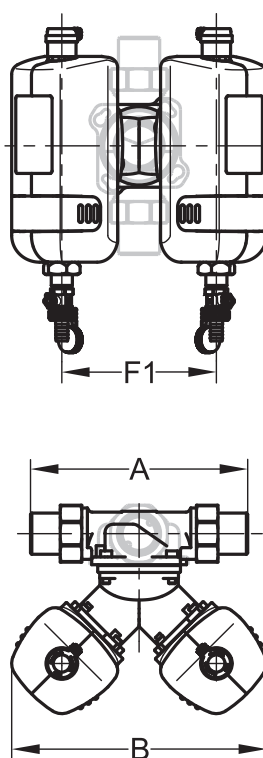
Type	JMFI	JMFI	JMFI	JMFI
Pipe Size	¾"	1"	1¼"	1½" *
Nominal flow rate m³/hr (gpm)	1.0 (4.4)	1.5 (6.6)	2.0 (8.8)	4.0 (17.6)
Nominal pressure loss psi (kPa)	0.58 (4)	1.01 (7)	2.18 (15)	2.18 (15)
For systems up to kW	approx. 22	approx. 34	approx. 46	approx. 100
Max. heating water temperature °C (°F)	90 (194)	90 (194)	90 (194)	90 (194)
Max. operating pressure psi (kPa)	87 (600)	87 (600)	87 (600)	87 (600)
Weight approximate kg (lbs)	2.1 (4.6)	2.3 (5.1)	2.8 (6.2)	8.4 (18.5)
Order number	8060083	8060084	8060085	8060086

* 2 JMFI 1" with parallel pipe connectors

Installation Dimensions



Type JMFI ¾" - 1¼"



Type JMFI 1½"

Type	JMFI	JMFI	JMFI	JMFI
Pipe Size	¾"	1"	1¼"	1½" *
A Installation length mm (inches)	180 (7.1)	195 (7.7)	230 (9.1)	252 (9.9)
B Unit width mm (inches)	116 (4.6)	116 (4.6)	116 (4.6)	296 (11.7)
C Height above pipe center mm (inches)	141 (5.6)	141 (5.6)	141 (5.6)	141 (5.6)
D Height below pipe center mm (inches)	227 (8.9)	227 (8.9)	227 (8.9)	227 (8.9)
E Depth to pipe center mm (inches)	131 (5.2)	131 (5.2)	136 (5.4)	209 (8.2)
F Waste water connection center to pipe center mm (inches)	82 (3.2)	82 (3.2)	87 (3.4)	151 (5.9)
F1 Distance waste water connection centres mm (inches)	-	-	-	180 (7.1)
G Connection dimension for waste water mm (inches)	15 (0.6)	15 (0.6)	15 (0.6)	15 (0.6)
Order number	8060083	8060084	8060085	8060086



JUDO HEIFI-AIR-FREE

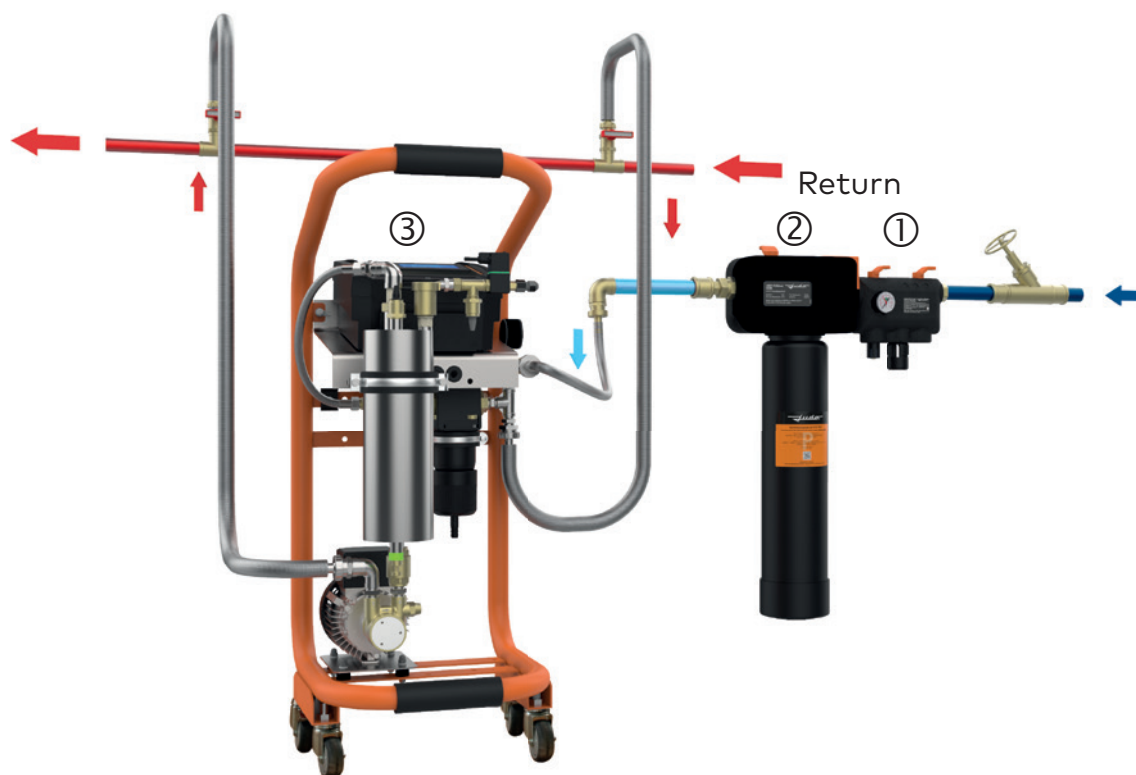
The efficient degassing system for closed loop heating and cooling systems

The JUDO HEIFI-AIR-FREE works on the principle of dynamic degassing by vacuum. Water is pulverised in a chamber under vacuum, this leads to gases being unable to contain this dissolved state and being set free. This way the JUDO HEIFI-AIR-FREE reduces the amount of dissolved gases to practically zero.

Specifications:

- ✓ Reduces energy use, maintenance costs and repairs
- ✓ Simple and fast connection even in limited space
- ✓ Integrated gas meter
- ✓ ECO mode for ongoing savings
- ✓ LCD-Touch screen with intuitive user guidance
- ✓ Graphical process representation
- ✓ Notifications history
- ✓ Safe storage of data on EPROM

INSTALLATION EXAMPLE:

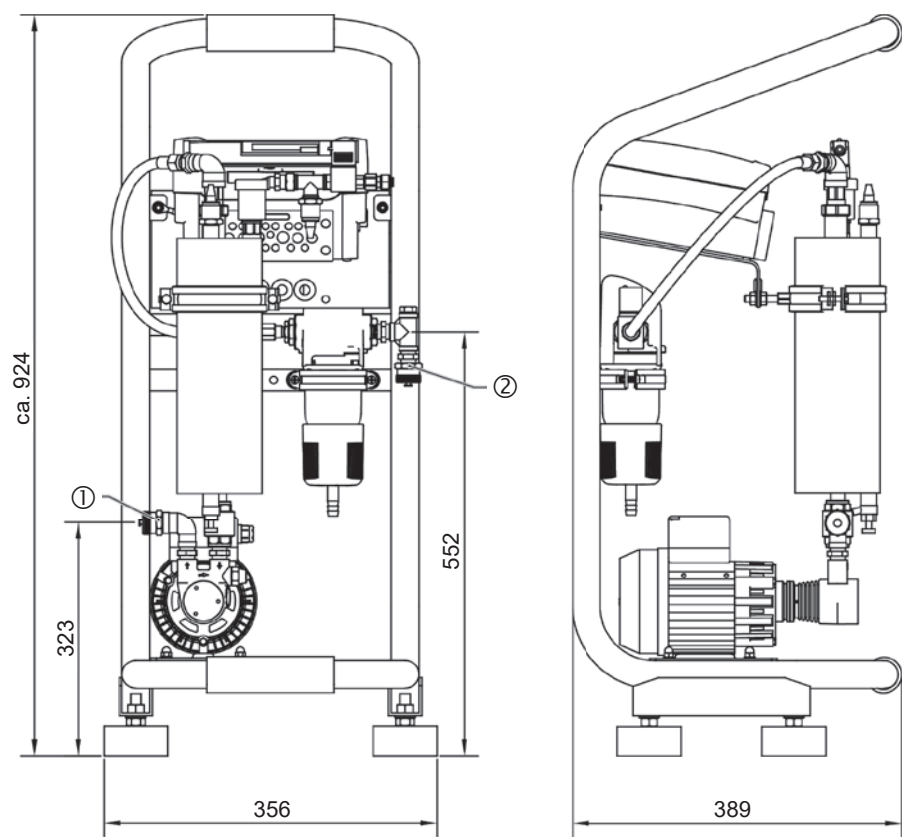


- ① JUDO HEIFI-FÜL PLUS – The comfortable and norm compliant solution for the fill of heating systems with a perfect all round protection. Fixed installation unit with integral type BA pipe separator.
- ② Fill or top up with softened or demineralised water using JUDO HEIFI fill blocks PURE/SOFT.
- ③ JUDO HEIFI-AIR-FREE – degassing unit for heating water. Reduces levels of free and dissolved gases to almost zero. Combats erosion and corrosion. Economical to run thanks to ECO function.

Technical Data

Type	JHAF 60	JHAF 400
Pipe Size	¾"	¾"
Max. circulation (at 2 bar) l/hr	60	400
For system volumes up to m³	up to 2	2 - 30
For systems up to kW	up to 40	40 - 600
Systems pressure psi (kPa)	1.5 / 5.0	1.5 / 5.0
Max. Medium temperature °C (°F)	60 (140)	60 (140)
Power supply V/Hz	120/60	120/60
Dimensions Length x Width x Height mm (inch)	approx. 356 x 389 x 924 (14.0 x 15.3 x 36.4)	approx. 356 x 389 x 924 (14.0 x 15.3 x 36.4)
Weight approximate kgs (lbs)	approx. 25 (55)	approx. 25 (55)
Order number	8060088	8060087

Installation Dimensions



- ① outlet ¾" AG
- ② inlet ¾" AG

JUDO HEIFI-PURE & CLEAN

The JUDO HEIFI-PURE & CLEAN treats water in all closed circuits - without emptying, without refilling and without interruption of operation. The unit filters, desalinates or softens heating, cooling and process water in one step – without having to shut down the system. This is ensured by the built-in circulating pump, which avoids malfunctions and enables a high treatment capacity.

NEW
with high-efficiency pumps



Type JHPC 1



Optional GSM module for sending status messages via SMS available.

JUDO HEIFI-PURE & CLEAN – The universal water treatment system

Specifications:

- ✓ Standard heating water quality with desalinated or softened water
- ✓ Powerful and quickly ready for use due to fully-fledged unit
- ✓ Saves resources and costs: treats water in closed circuits – without emptying, without refilling and without interrupting operations
- ✓ Efficient and versatile: the system filters and desalinates or softens heating and process water in one step – without having to shut down the system
- ✓ Everything in view: Display of conductivity and flow rate on the LCD
- ✓ Safe: Monitoring based on differential pressure and conductivity
- ✓ Communicative: optional GSM module for sending status messages *
- ✓ High-efficiency circulating pump

JUDO PURE & CLEAN – Portable The flexible water treatment system

Specifications:

- ✓ Display of the conductivity on an LCD
- ✓ high processing capacity
- ✓ Processing without interruption of operation
- ✓ Monitoring based on differential pressure and conductivity
- ✓ Communicative: optional GSM module for sending status messages *



Type JHPC-T



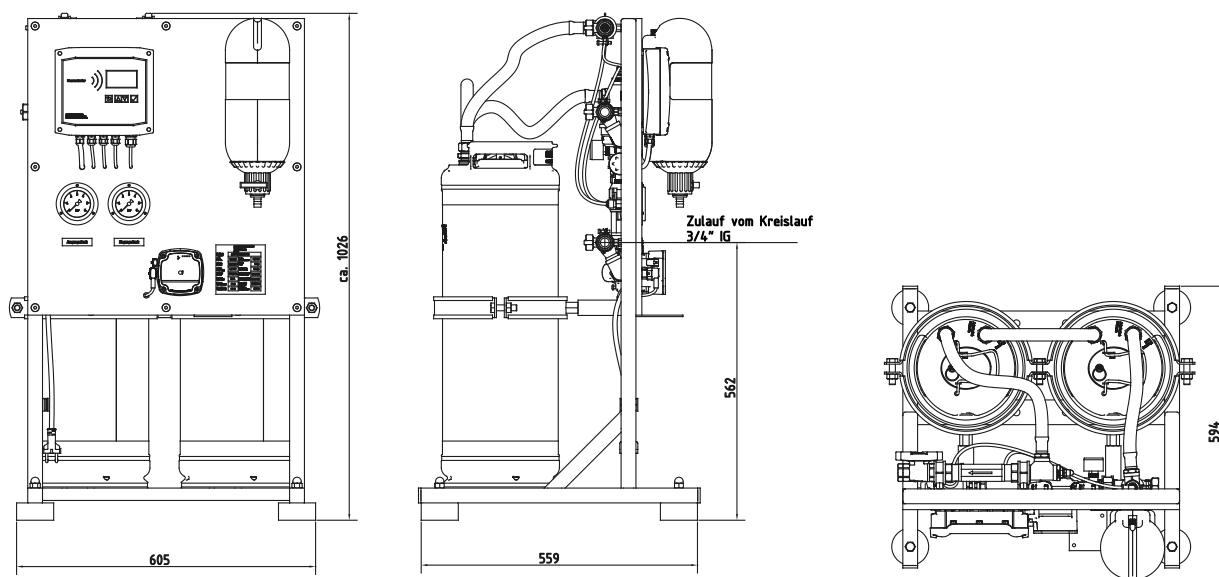
Optional GSM module for sending status messages via SMS available.

* For sending status messages via SMS, a separate mini-SIM card from any provider is required on site. This incurs costs.

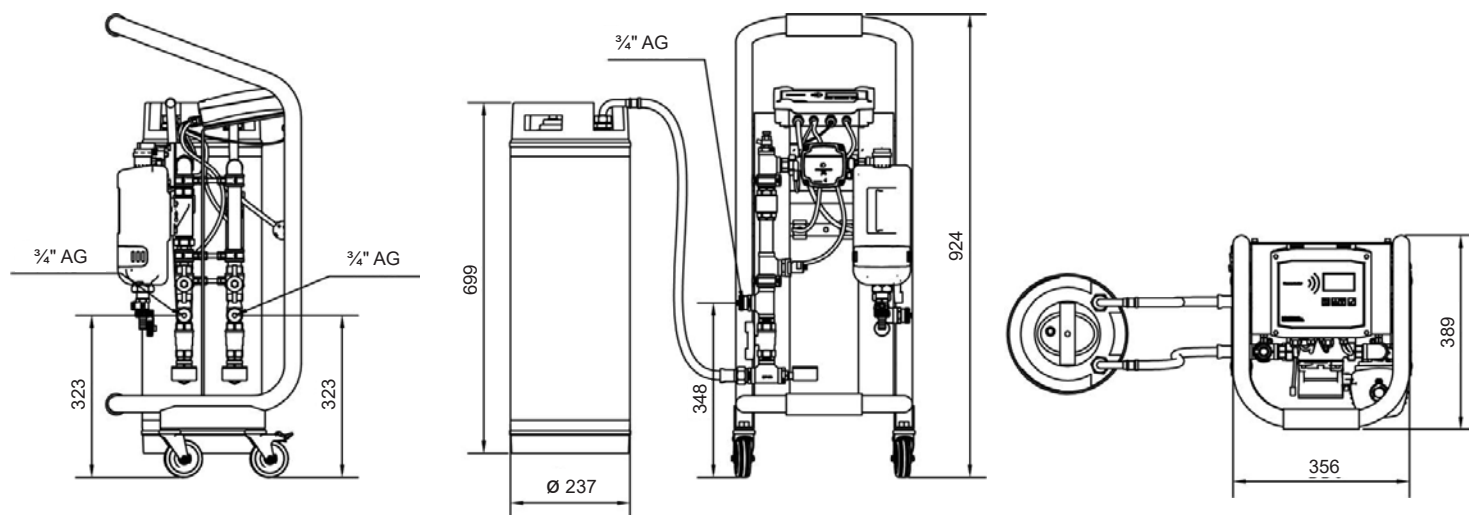
Technical Data

Type	JHPC 1	JHPC 1 GSM	JHPC-T	JHPC-TG
Entry connection in loop inch	1"	1"	¾"	¾"
Exit connection in loop inch	¾"	¾"	¾"	¾"
Entry connection, top-up inch	¾"	¾"	¾"	¾"
Max. flow rate l/h	700	700	700	700
Max. capacity, desalination °dH x m³	40	40	-	-
Max capacity, softening °dH x m³	100	100	-	-
Resin volume liter	25	25	-	-
Max. environmental pressure °C (°F)	40 (104)	40 (104)	40 (104)	40 (104)
Power supply V/Hz	120/60	120/60	120/60	120/60
Motor power kw	0.37	0.37	0.06	0.06
Dimensions Width x Height x Depth mm (inch)	605 x 1016 x 595 (23.8 x 40 x 23.4)	605 x 1016 x 595 (23.8 x 40 x 23.4)	approx. 356 x 389 x 924 (14.0 x 15.3 x 36.4)	approx. 356 x 389 x 924 (14.0 x 15.3 x 36.4)
Weight (approx. incl. resin) * kgs (lbs)	68 (150) *	68 (150) *	19 (42)	19 (42)
Order number	8057066	8057067	8057064	8057065

Installation Dimensions (JUDO PURE & CLEAN)



Installation Dimensions (JUDO PURE & CLEAN – Portable)



JUDO JMHB-RO mini

**For the filling of heating loops with desalinated water.
A pre-mounted complete system on a robust frame with rollers.**

For the desalination of clear, colourless and iron and manganese-free drinking and process water.
Version: Pre-mounted system ready for use, complete with internal hydraulics, piping and electronics, coated frame containing: Filter (Filter rating 5 µm), automatic raw water and rejection valve, low noise rotating pump, manometer for systems and pump operational pressures, polyamide cartridge, permeate flow display, water meter, Systems pressure switch and non-return valve in the permeate line max. pressure governor, low water level indicator, conductivity meter, lockable rollers, electronic controls incl. Conductivity display and operations and error displays. Pipe connections incl. BA pipe separator.

The quality of water used in the heating loop plays a vital role in maintaining the system's efficiency. The desalination of fill and top-up water is a proven method of reducing the risk of corrosion due to the low conductivity of the water used. JUDO offers a compact R/O unit which can be used from site to site. The unit has a max. capacity of 100 litres and up to 2400 Litres per day.

The Advantage: The unit operates as a completely closed system. It shuts down as soon as a pre-set counter pressure is reached, and waits in stand-by until it is needed again. Pre-mounted on a sturdy frame, the system is strong enough to survive the often rough site conditions.



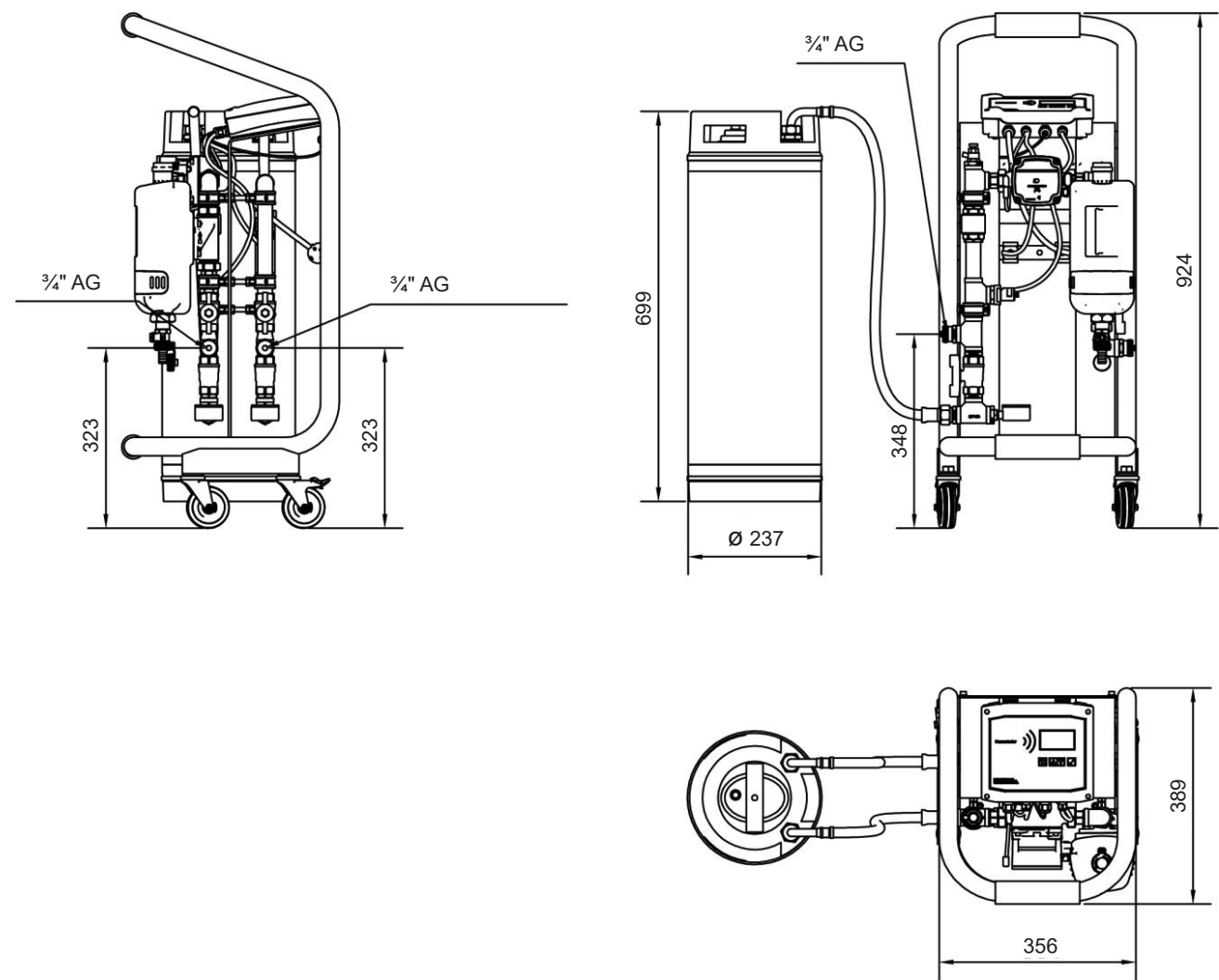
Specifications:

- ✓ **Treatment to the highest European standards**
with desalinated water
- ✓ **Highly efficient and ready to use** mobile R/O unit
- ✓ **Uncomplicated**
nor regeneration or resin-exchange required
- ✓ **Practical**
completely pre-mounted and transport ready

Technical Data

Type	JMHB-RO mini
Treated water approx. l/h *	80 - 100
Treated water m³/day *	1.9 - 2.4
Raw water approx. l/h	300
Max counter pressure treated water psi (kPa)	14 - 116 (96.5 - 799.8)
Salts retention level %	> 98
Power supply V/Hz	120/60
Motor power kw	0.25
Dimensions Length x Width x Height mm (inch)	approx. 356 x 389 x 924 (14.0 x 15.3 x 36.4)
Raw water inch	¾"
Treated water inch	¾"
Waste water inch	¾"
Order number	8470049

Installation Dimensions



GENERAL TERMS AND CONDITIONS OF SALE FOR U.S.A., CANADA AND MEXICO (Version 2.0/150314)

Unless otherwise agreed to in writing, all products ("goods") sold by JUDO Water Treatment Inc. ("JUDO") to its customers are sold only on the terms and conditions set out below.

Credit approval:

All new clients will be required to apply for adequate credit approval through JUDO.

Pricing and Transfer of Title:

Prices quoted are valid for 60 days unless otherwise specified in writing.

Prices quoted in the following currencies: Canadian pricing for sales in Canada, US pricing for the United States of America and Mexico. Unless otherwise specified in writing, transfer of title and risk of loss shall pass to customer at the FCA point, being JUDO's distribution centre in Toronto, Canada.

Pricing, quotations and specifications are subject to change without prior notice unless fixed to a specific validity, at time of quotation. Unless otherwise specified in writing, JUDO has the right to change the price, freight allowance or terms of payment specified herein, provided JUDO has given purchaser at least thirty (30) days prior written notice of any such change.

Terms of payment:

Where credit has been accepted, terms of payment available for deliveries are: 30 days net 15 days 2 % discount. In all other cases, payment is to be made in advance or in accordance with the terms of individual agreements.

Taxes:

All taxes and levies, local, national or international are for the purchaser's account. Purchaser's claiming exemptions are required to provide proper and satisfactory documentation in advance.

Deliveries:

Delivery dates as quoted by JUDO are estimates. Whereas JUDO will make commercially reasonable efforts to honour delivery dates, JUDO assumes no liability for late deliveries or the consequences arising therefrom.

Return of Goods:

Unless otherwise covered by separate agreement, no goods may be returned to JUDO without its prior written permission. For **FEATURED** products, a restocking charge of 10% of the invoiced value is applicable for all goods returned. Goods must be returned unused, unopened and in their original packaging. For **FEATURED** products that are returned opened, unused, non-featured products, and all parts, a restocking charge of 25 % of the invoiced value is applicable for all goods returned. Costs of transport for returned goods are for the purchaser's account. Returned goods without an RGA number will not be accepted. No return on prior goods that are discounted or out of production.

Order cancellations:

Orders may only be cancelled with prior agreement of JUDO. A cancellation fee reflecting work already carried out in processing the order to the time of the cancellation will be charged.

Allocation:

If for any reason, JUDO is unable to supply any or the total demand for the goods specified herein, JUDO may, in its sole discretion, distribute its available supply of goods among its customers as it sees fit. JUDO shall have no obligation to purchase supplies of the goods from third parties to enable it to perform its obligations to the purchaser.

Warranties:

Subject to any earlier expiry date noted on the goods or any component thereof, JUDO warrants that the goods delivered hereunder will be free from defects in material or workmanship for a period of 12 months from the date of installation. This warranty is valid for the initial installation of the product only, and shall be void if the product (i) has been moved from its initial place of installation, (ii) has been subjected to faulty maintenance, abuse, misuse, accident or other damages, (iii) was not installed in accordance with JUDO instructions, (iv) has been modified in a manner inconsistent with the goods as shipped by JUDO, or (iv) was not purchased direct from JUDO or one of its authorized distributors. JUDO's obligations under this warranty are limited to the repair or replacement at its factory, of any device or part thereof which shall have been proven defective. If JUDO is requested to replace defective parts at the place of first installation, JUDO, at its option, may agree to such request, provided, however, that its travelling time, expenses and estimated labour are paid for in advance by such end-user. JUDO's option to repair or exchange the product under this warranty does not cover any labour or other costs of removal or installation, nor shall JUDO be responsible for any other incidental or consequential damages attributable to a product defect or to the repair or exchange of a defective product, all of which are expressly excluded from this warranty.

THERE ARE NO WARRANTIES OF MERCHANTABILITY OR FITNESS FOR A PARTICULAR PURPOSE OR ANY OTHER REPRESENTATIONS, WARRANTIES OR CONDITIONS, EXPRESS OR IMPLIED, STATUTORY OR OTHERWISE, OTHER THAN THOSE HEREIN CONTAINED.

ORIGINAL PROOF OF PURCHASE IS REQUIRED FOR ALL WARRANTY CLAIMS.

Indemnification:

Purchaser will defend, indemnify and hold harmless JUDO against all claims, loss, liability, damages and expenses on account of any damage to property or injury or death of persons caused by or arising out of purchaser's distribution, storage, handling, use, or disposal of goods or caused by or arising out of any breach of contract, fundamental or otherwise or caused by or arising out of any tortious acts or omissions or negligence or from any applicable statutory provision or otherwise.

Limitation of Liability:

The liability of JUDO for damages is limited to the purchase price of the goods in respect of which damages are claimed. The remedy herein provided shall be the exclusive and sole remedy of the purchaser, and in no event shall JUDO be liable for any other damages (including, without limitation, incidental, consequential or special damages of any kind, however caused), whether not resulting from its negligence.

Technical Assistance:

At purchaser's request, JUDO may furnish such technical assistance and information as it has available with respect to the use of goods and purchaser assumes sole responsibility for results obtained in reliance thereon. The furnishing of such technical assistance and information shall be governed by the provisions of this section and no claim or action may be founded on any negligence of JUDO in furnishing such assistance and information, the accuracy of which, purchaser will confirm independently.

General:

(a) Waiver by either party of any breach or default by the other hereunder shall not be deemed a waiver by any such party of any breach or default by the other which may thereafter occur.

(b) These terms, including, if applicable, any other written agreement signed by both JUDO and customer to which these terms may be attached, contain all the conditions with respect to the purchase and sale of goods sold hereunder. These conditions supersede any previous documentation or communication between the parties and no modifications thereof shall be binding on JUDO unless specifically contracted in writing and agreed to by an authorized representative of JUDO. **No modifications shall be effected by the acknowledgement or acceptance of purchase order forms or any other documents containing different conditions.** If any of the provisions of these conditions are invalid, ineffective or prohibited by any law (federal, provincial or otherwise), such provisions shall be deemed severed from these terms to the extent of such prohibition without invalidating the remaining provisions hereof which shall remain binding upon the parties hereto.

(c) Sales hereunder shall enure to the benefit of, and be binding upon, the successors in business of the parties hereto but shall not otherwise be transferable or assignable in whole or in part without JUDO's prior written consent.

(d) The parties agree that the Sales of Goods Act (Ontario) and the United Nations Convention on Contracts for the International Sales of Goods, or any amendment thereto, shall not apply to the sale of goods.

(e) Notwithstanding section (d) above, this agreement shall be construed in accordance with the laws of Ontario and the parties agree that the courts of Ontario shall have jurisdiction.

(f) The parties hereto acknowledge that they have expressly requested and are satisfied that these terms be drawn up in English.

NOTE 1:

While JUDO does retain an inventory of FEATURED products for immediate delivery, it is recommended that you forward your Purchase Orders early so that we can ensure that the products you require are available to meet your schedule. For additional information, see Deliveries and Allocation. Non-FEATURED items are considered special orders and may take 4 – 8 weeks to be manufactured and delivered.

NOTE 2:

JUDO has the right to make changes to products without prior notification. Products may therefore not be exactly as shown.

PRODUCT INDEX

PRODUCT	TYPE	SIZE	FILTER	ORDER NO.	PAGE
FERROCLEAN	M	2½"	–	8055070	18-19
FERROCLEAN JACKET	Insulation	2½"	–	8057501	-
FERROCLEAN	M	3"	–	8055071	18-19
FERROCLEAN JACKET	Insulation	3"	–	8057502	-
FERROCLEAN	M	4"	–	8055072	18-19
FERROCLEAN JACKET	Insulation	4"	–	8057503	-
FERROCLEAN	M	5"	–	8055073	-
FERROCLEAN JACKET	Insulation	5"	–	8057504	-
FERROCLEAN	M	6"	–	8055074	18-19
FERROCLEAN JACKET	Insulation	6"	–	8057505	-
FERROCLEAN	M	8"	–	8055075	18-19
FERROCLEAN JACKET	Insulation	8"	–	8057506	-
FIMAT	AT	1½"	100	8020271	10-11
FIMAT	AT	2"	100	8020272	10-11
FIMAT	ATP	1½"	100	8020275	10-11
FIMAT	ATP	2"	100	8020230	10-11
FIMAT	M	1½"	100	8020266	10-11
FIMAT	M	2"	100	8020267	10-11
HEIFI-AIR-FREE 60	M	¾"	–	8060088	24-25
HEIFI-AIR-FREE 400	M	¾"	–	8060087	24-25
HEIFI-PURE & CLEAN	M	1"	–	8057066	26-27
HEIFI-PURE & CLEAN	M	1"	–	8057067	26-27
HEIFI-PURE & CLEAN	M	¾"	–	8057064	26-27
HEIFI-PURE & CLEAN	M	¾"	–	8057065	26-27
HEIFI-TOP	M	¾"	–	8060053	20-21
HEIFI-TOP	M	1"	–	8060054	20-21
HEIFI-TOP	M	1¼"	–	8060055	20-21
HEIFI-TOP	M	1½"	–	8060056	20-21
HEIFI-TOP	M	2"	–	8060057	20-21
JMHB-RO mini	M	-	–	8470049	28-29
MAFI	M	¾"	–	8060083	22-23
MAFI	M	1"	–	8060084	22-23
MAFI	M	1¼"	–	8060085	22-23
MAFI	M	1½"	–	8060086	22-23
PROFI	M	¾"	100	8010110	12-13
PROFI	M	1"	100	8010111	12-13
PROFI	M	1¼"	100	8010135	12-13
PROFI	M	1½"	100	8010136	12-13

PRODUCT	TYPE	SIZE	FILTER	ORDER NO.	PAGE
PROFI	M	2"	100	8010137	12-13
PROFI	M	2½"	100	8010138	12-13
PROFI	M	3"	100	8010117	12-13
PROFI	M	4"	100	8010139	12-13
PROFI	M	5"	100	8290015	12-13
PROFI	M	6"	100	8290016	12-13
PROFI	M	8"	100	8290017	12-13
PROFIMAT	AT	¾"	100	8020218	14, 15
PROFIMAT	AT	1"	100	8020219	14, 15
PROFIMAT	AT	1¼"	100	8020268	14, 15
PROFIMAT	AT	1½"	100	8020269	14, 15
PROFIMAT	AT	2"	100	8020270	14, 15
PROFIMAT	AT	2½"	100	8025031	14, 15
PROFIMAT	AT	3"	100	8025032	14, 15
PROFIMAT	AT	4"	100	8025033	14, 15
PROFIMAT	ATP	¾"	100	8020220	14, 16
PROFIMAT	ATP	1"	100	8020221	14, 16
PROFIMAT	ATP	1¼"	100	8020273	14, 16
PROFIMAT	ATP	1½"	100	8020243	14, 16
PROFIMAT	ATP	2"	100	8020274	14, 16
PROFIMAT	ATP	2½"	100	8025029	14, 16
PROFIMAT	ATP	3"	100	8020210	14, 16
PROFIMAT	ATP	4"	100	8020211	14, 16
PROFIMAT	ATP	5"	100	8320016	14, 16
PROFIMAT	ATP	6"	100	8025025	14, 16
PROFIMAT	ATP	8"	100	8320015	14, 16
PURE@TAP Faucet	Brushed Nickel	–	–	8115019	17
PURE@TAP Faucet	Chrome	–	–	8115022	17
PURE@TAP Cartridges	Set of 2	3/8"	0.2	2110125	-
PURE@TAP	M	3/8"	0.2	8110512	17

Backwash Type:

AT – Automatic Time Actuated

ATP – Automatic Time and Pressure Differential Actuated

Auto - Automatic

M – Manual

Filter: Standard size filter shown in microns.

Other sizes may be available on request.

CONTACT INFORMATION FOR JUDO WATER TREATMENT INC.

Head Office:

240 Lesmill Road,
Toronto, Ontario M3B 2T5
CANADA

USA Location:

501 Amherst Street,
Buffalo, New York 14207
USA

Telephone: (416) 441-1556; Toll Free (Canada/USA): (866) 451-5836

Email: info@judo-online.com · **Website:** judo-online.com



*Build it Green
Keep it Green®*

Notes

THERE IS ALWAYS A GOOD REASON TO GIVE YOUR DRINKING WATER SYSTEM A LOT OF THOUGHT. WE KNOW, IT'S BEEN KEEPING US BUSY FOR THE PAST 80 YEARS!

Ever since the company was founded back in 1936 we have been designing and developing innovative technologies and processes specifically aimed at optimal water treatment and designed to protect the health, installation systems and appliances used by you, the consumer.

During this long history, JUDO inventions have paved the way into the future of the water treatment industry and set the standards now accepted across the world. From the very first fine scale dosing unit back in 1952, over the first ever protective filter world wide right up to today's fully automatic water softening units.

JUDO products are "Made in Germany" only. They conform not only to the high requirements of German norms and guidelines, but also to the even higher ones we set for ourselves.

Our philosophy is: when it comes down to our most important foodstuff, second best is just not good enough.



QUALITY MADE IN GERMANY AND APPROVED INTERNATIONALLY!



The last word in German approvals for the German Gas and Water industries, the DVGW has been setting and controlling the highest levels of product efficiency, health and safety standards enjoyed by the German market for over 150 years and is accepted world wide as one of the best standard levels.



The CE-sign demonstrates that the manufacturer confirms that his product conforms with the requirements as set out in directive 765/2008 of the harmonized regulations law within the community. CE was set up to ensure the end user access to safe products within the 30 signatory states within the common European economic area.



ACS stands for "attestation of sanitary conformity" and is the standard used by the French authorities for materials used in direct contact with drinking water. The ACS symbol is an assurance of the highest standards in performance conformity.



The WaterMark is the certificate of approval for products used with drinking water in Australia and New Zealand. It confirms that this product conforms with the requirements of the ABCB and is allowed for use accordingly. The Australian Building Codes Board (ABCB) is the norming institute responsible for the development and care of regulations for building and sanitary installation.



The CSA, Canadian Standards Association, is an independent NPO with offices in 14 countries developing and controlling over 3000 norms governing safety, design and performance in the water industry. CSA is recognised as an equivalent standard by such renowned organisations as UL in the USA.



The BELGAQUA certificate from the Belgian Association of the water industry is awarded to products and materials conform to the requirements for contact with drinking water.



PZH is an institute certifying that products pose no danger to health or the environment when used in accordance with manufacturer's instructions. The PZH hygiene certificate is very important in the water treatment industry.



The GOST certificate is the official confirmation that these products comply with the national requirements for quality and safety in the Russian Federation.



The swiss water and gas association tests and certifies products ensuring these are in line with the highest current levels of quality, safety and technical suitability for use in gas and water installations.



The ZVSHK quality rating offers safety and orientation to the plumbing trade, The ZVSHK rewards Manufacturers with the "Certified Manufacturer - quality, security and service" mark for their manufacturing processes and high standards in product quality and scope of customer service as well as investment in R&D, thus supporting the expansion of the industry as a whole.



The Plus X award is the world's largest award for innovation in technology, sports and lifestyle chosen by a jury consisting of 25 branches of the economy, with 23 competent partners and a total marketing investment volume of over 25 million Euros.



The iF design awards are counted amongst the most important in the world of international design. The iF logo awarded to the contest winner is accepted world wide as an indicator for excellence in design and is highly regarded by designers everywhere.



Quality management standard ISO 9001 is one of the most widely accepted quality management approvals both on a national and international level. Our ISO 9001 certification goes to prove how seriously we take our high levels of quality management, and keep developing them further.





Made in Germany – engineered for the world

All JUDO products are engineered and manufactured exclusively in Germany thus ensuring the high levels of product quality expected. At the same time JUDO is a globally active company represented at world class exhibitions and with many local offices in Europe and beyond as well as reliable any long running partnerships in over 50 countries, and rising!

Our warranty to you, the consumer, of our commitment to your market!



Quality made in Germany
JUDO Water Treatment Inc.
240 Lesmill Road
Toronto, ON Canada M3B 2T5

Telephone: (416) 441-1556
Toll-Free (Canada/USA): (866) 451-5836
Fax: (416) 391-4273
Toll-Free Fax (Canada/USA): (877) 761-3335
e-mail: info@judo-online.com
www.judo-online.com



Excellence in Quality
and Engineering
Made in Germany