

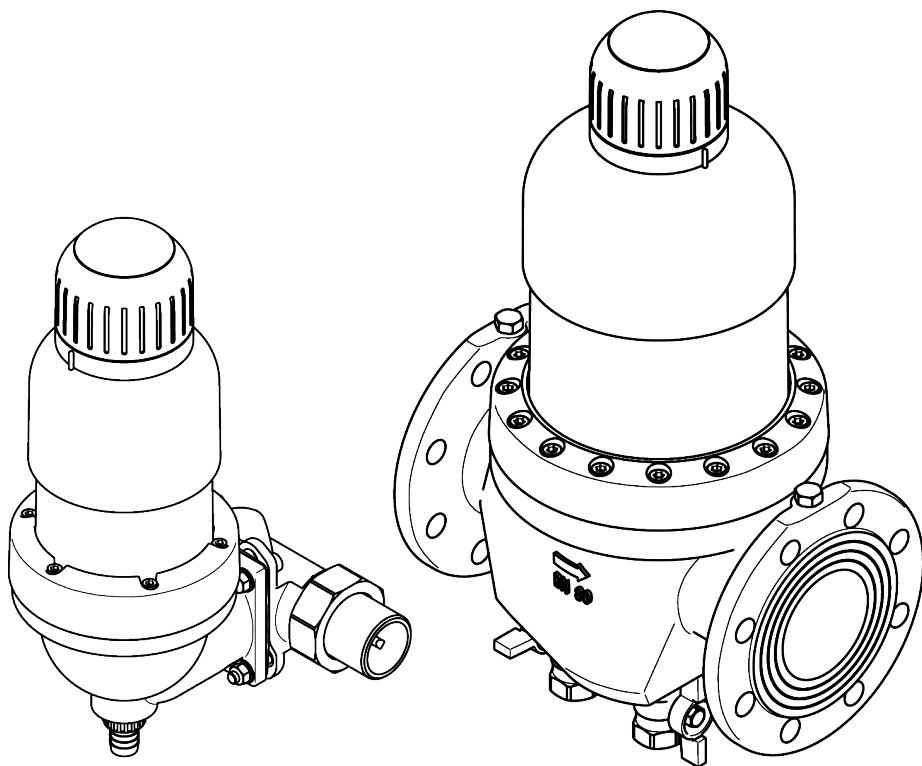
Installation and operating instructions

JUDO PROFI-QC

Backwash protective filter 1½" - DN 100

Valid for: EU countries and Switzerland

Language: English



Read before use and store!



JUDO®

Queries, orders, customer service

JUDO Wasseraufbereitung GmbH
Postfach 380
D-71351 Winnenden

Email: info@judo.eu • judo.eu

Office address:

JUDO Wasseraufbereitung GmbH
Hohreuschstraße 39 - 41
D-71364 Winnenden

Dear customers,

Thank you for the confidence you have shown in us by purchasing this product. You have purchased a state-of-the-art device. It has been carefully checked prior to delivery. Nevertheless, if difficulties occur, please contact the closest customer service (see chapter Customer service).

Trademarks:

Trademarks used in this document are the protected and registered trademarks of the owners.

© JUDO Wasseraufbereitung GmbH
D-71364 Winnenden

All rights reserved.

Reprinting, even in excerpt form, is only permitted with special approval.

These installation and operating instructions are intended for both installers, who are in charge of installing, maintaining or repairing the device, and for the operators of the device.

Contents

1	Safety.....	4
1.1	Intended use.....	4
1.2	Application limits.....	4
1.3	Safety instructions.....	5
1.4	Symbols used.....	6
1.5	Units used.....	6
2	Product information.....	6
2.1	Scope of supply.....	6
2.2	Function description.....	7
2.3	Materials used.....	7
2.4	Approval marks.....	8
3	Installation.....	8
3.1	Conditions.....	8
3.2	Installation of the rotary flange fitting.....	9
3.3	Installation of the device.....	9
3.4	Draining of the backwash water.....	10
3.5	Commissioning.....	12
4	Operation.....	12
4.1	Cleaning of the sieve insert (backwashing).....	12
4.2	Conversions, changes.....	13
4.3	Maintenance, repair, spare parts.....	13
4.4	Temporary removal of the device.....	13
5	Fault.....	14
6	Servicing.....	15
6.1	Cleaning.....	15
6.2	Warranty and maintenance.....	15
7	Technical data.....	16
7.1	Installation dimensions.....	17
7.2	Accessories.....	18
7.3	Spare parts.....	19
8	Disposal.....	25
9	Maintenance log.....	26
10	Customer service.....	28

1 Safety

These operating instructions must always be available at the place of use of the device.

1.1 Intended use

The device is for the

- Filtration

of drinking water in domestic water piping and for residential, commercial and industrial use. It removes coarse and fine-grained particles from the drinking water, which are larger or equal to the mesh size of the filter, in order to prevent

- pipe damage caused by corrosion
- malfunctions of fittings or control and regulating devices caused by foreign bodies.

The device can be installed in all commercially available drinking water pipes. Both installation and use of the device are subject to the applicable national regulations.

i Particles that are smaller than the mesh size of the filter supplied and materials causing cloudiness cannot be filtered out of the water.

1.2 Application limits

1.2.1 Water quality

The water to be filtered must comply with the European Drinking Water Directive (98/83/EG). Before using the device with water that does not comply with this Directive, it is essential to consult the manufacturer.

1.2.2 Water pressure

JPF-QC 1½" - 2", JPF-QC DN 65



CAUTION

The water pressure must not exceed 16 bar input pressure. The device must not be installed if the mains pressure is above 16 bar (even for a short time)!

Nominal pressure	PN 16
Operating pressure	1.5 bar - 16 bar

The water pressure must not fall below 1.5 bar as otherwise backwashing can be impaired!



Starting at an operating pressure of 10 bar, increased wear can be expected!

JPF-QC DN 80 - 100



CAUTION

The water pressure must not exceed 10 bar input pressure. The device must not be installed if the mains pressure is above 10 bar (even for a short time)!

Nominal pressure	PN 10
Operating pressure	1.5 bar - 10 bar

The water pressure must not fall below 1.5 bar as otherwise backwashing can be impaired!

1.2.3 Water and ambient temperature

The filter is suitable for use in cold drinking water up to a maximum water and ambient temperature of 30 °C.

1.3 Safety instructions

1.3.1 Electrical danger



Risk of electric shock

No electrical wiring or equipment that is not splash-proof may run or be stored below the device. Electrical devices/equipment located in the vicinity of the device must be splash-proof or comply with the legal regulations for wet rooms.

1.3.2 Warning of property damage



WARNING

Risk of water damage or damage to property

The device may only be installed by qualified technical personnel.

The installation room must be dry and free from frost.

The ambient temperature must not exceed 30 °C! In higher temperatures or direct sunlight, material damage may occur up to and including breakage of device parts.

An adequately sized waste water connection (e.g. floor drain) in compliance with DIN 1986 must be provided.

In order to ensure safe drinking water hygiene, a free discharge of the waste water acc. to DIN EN 1717 must be ensured.

The pipe must be able to safely support the device (weight: see chapter 7). If necessary, the pipes must be provided with additional fastenings or support.

If no bypass valve is installed, a shut-off valve must be installed upstream of the unit in order to interrupt the water supply during installation, maintenance, repair or malfunction of the device.

Install the device in a vertical position ($\pm 5^\circ$). Otherwise, water may escape and cause water damage.

For the installation of the device in domestic water piping, only use the supplied built-in rotary flange (see chapter 3.2).

The flange surface of the rotary flange fitting must be upright!

The rotary flange fitting must be fitted so that it is free from mechanical stress or strain. Otherwise mechanical damage to the pipe or the rotary flange fitting up to and including breaks can result.

For proper sealing the profile of the profile flange seal must point towards the rotary flange fitting (see Figure 3).

Only operate the device in a technically faultless condition:

- Check for damage prior to installation.
- Immediately have any malfunctions in operation rectified by qualified technical personnel.

Persons who, due to their physical, sensory or mental abilities or their inexperience or lack of knowledge, are unable to operate the device safely may not operate it without supervision or instruction from a responsible person.

Regular backwashing of the device is required to ensure safe drinking water hygiene (see chapter 4.1.1).

Before carrying out a backwash, ensure that the wastewater connection is functional.

At the end of the backwashing process, turn the handwheel until it engages so that no more backwash water escapes. Otherwise, water may constantly escape and cause water damage.

Do not use household cleaning agents to clean the outside of the device, but

only use clear water to avoid embrittlement of the plastic.

The device may only be repaired by qualified technical personnel.

Only use original spare parts for repairs.

Before performing work on the device that goes beyond pure operational use, the device must be depressurised! If this is ignored, the result may be uncontrolled escape of water resulting in water damage to the building/home.





If the device is removed due to an interruption of operation:

- Protect the flange surfaces against damage to ensure proper sealing.
- Protect the device from dirt so as not to impair drinking water hygiene.
- Store the device in a frost-free place to prevent damage caused by freezing water and leakage.

Unauthorised conversions and changes are forbidden for safety reasons. These can impair the functioning of the device, leading to leaks and, in the worse case scenario, to bursting of the device.

1.4 Symbols used

The safety instructions contained in these operating instructions are labelled with the following symbols:

	Indication of existing dangers
	Warning of electric voltage
	Torques specified by the manufacturer
	User tips and other information

Instructions attached directly to the device, e.g.:

- Direction of flow (arrow)
- Type label
- Cleaning information

must be observed and maintained in legible condition.

1.5 Units used

Unit	Conversion
bar	1 bar = 10^5 Pa = 0.1 N/mm ²
1½"	DN 40
2"	DN 50

2 Product information

2.1 Scope of supply

- Backwash protective filter, pre-assembled
- Rotary flange fitting
- Installation and operating instructions

2.2 Function description

Unfiltered water flows into the device through the rotary flange. A coarse filter prevents large dirt particles from reaching the fine filter. The water flows from the outside to the inside through a cylindrical sieve insert. Dirt particles remain on the sieve

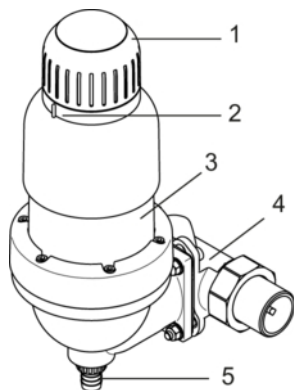


Fig. 1: Functional description
JPF-QC 1 1/2" - 2"

- 1 Handwheel for backwashing
- 2 Adjusting ring for the next backwashing
- 3 Transparent filter bowl
- 4 Rotary flange fitting
- 5 Waste water connection

fabric of the sieve insert. The adhering residues are visible from outside through the transparent filter bowl.

Subsequently the filtered water exits the device again via the rotary flange fitting.

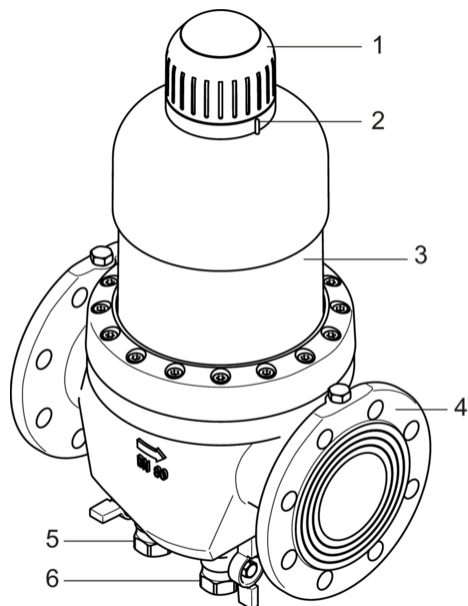


Fig. 2: Functional description
JPF-QC DN 65 - 100

- 1 Handwheel for backwashing
- 2 Adjusting ring for the next backwashing
- 3 Transparent filter bowl
- 4 Flange fitting according to DIN EN 1092
- 5 Blue handled ball valve, for rinsing out coarse particles from the grit trap
- 6 Black handled ball valve, with waste water connection for the backwashing water (to be closed only in the case of failure)

2.3 Materials used

The materials used are resistant to the physical, chemical and corrosive loads

expected to be encountered in drinking water. They meet the requirements specified in the following standards:

- DIN EN 13443-1
- DIN 19628
- DIN 50930-6

All materials are hygienically and physiologically harmless and fulfill the requirements and directives of the Umweltbundesamt (UBA). Plastics fulfil the requirements of DIN EN 16421.

2.4 Approval marks



The device complies with the technical regulations for drinking water installation according to DIN EN 806ff. and the national supplement DIN 1988ff. as well as DIN EN 1717.

It has been tested and certified by the DVGW (Deutsche Vereinigung des Gas- und Wasserfaches e. V. - Technisch-wissenschaftlicher Verein) in accordance with the requirements

- of the DIN EN 13443-1 and DIN 19628 for mechanically active filters.

The device bears the DVGW mark as proof of certification.



Only devices with a standard sieve mesh width of 0.1 mm carry the DVGW test mark. Devices with the available special mesh widths 0.03 mm, 0.32 mm and 0.5 mm are not part of the test according to DIN EN 13443-1 and DIN 19628 and are therefore not permitted to wear the approval mark.

3 Installation



CAUTION

The device may only be installed by qualified technical personnel.

Installation of the device upstream of the water meter is forbidden.

3.1 Conditions



CAUTION

Risk of property damage or water damage!

The pipe must be able to safely support the device (weight: see chapter 7). If necessary, the pipes must be provided with additional fastenings or support.

To ensure convenient operation and maintenance of the device, always adhere to the specified clearances in chapter 3.4.1.

3.1.1 Requirements for the place of installation



CAUTION

The installation room must be dry and free from frost.

The ambient temperature must not exceed 30 °C! In higher temperatures or direct sunlight, material damage may occur up to and including breakage of device parts.

An adequately sized waste water connection (e.g. floor drain) in compliance with DIN 1986 must be provided.

3.2 Installation of the rotary flange fitting

JPF-QC 1½" - 2"



CAUTION

The flange surface of the rotary flange fitting must be upright!

The rotary flange fitting must be fitted so that it is free from mechanical stress or strain. Otherwise mechanical damage to the pipe or the rotary flange fitting up to and including breaks can result.

The built-in rotary flange serves as a connecting element between the domestic water installation and the device. It is suitable both for horizontal and vertical pipes.

Attention: Install the built-in rotary flange in the flow direction! This is indicated by an arrow integral with the casting.



If the installation is twisted, back-washing the device is not possible.

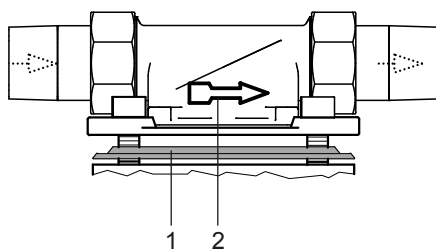


Fig. 3: Rotary flange fitting

- 1 Profile flange seal
- 2 Flow direction arrow

3.3 Installation of the device



CAUTION

If no bypass valve is installed, a shut-off valve must be installed upstream of the unit in order to interrupt the water supply during

installation, maintenance, repair or malfunction of the device.

Install the device in a vertical position ($\pm 5^\circ$). Otherwise, water may escape and cause water damage.

For the installation of the device in domestic water piping, only use the supplied built-in rotary flange (see chapter 3.2).

The flange surface of the rotary flange fitting must be upright!

For proper sealing the profile of the profile flange seal must point towards the rotary flange fitting (see Figure 3).

JPF-QC 1½" - 2"

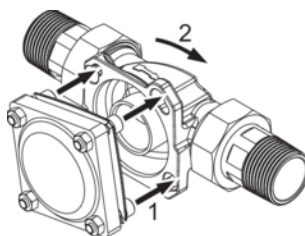


Fig. 4: Attach and engage appliance

- 1 Insert screws
- 2 Turn clockwise to engage screws

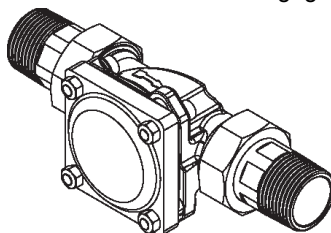



Fig. 5: Connection of appliance engaged

Do not undo the screws of the device!

1. Insert the heads of the four flange screws through the bayonet holes on the rotary flange fitting (see Figure 4).
2. Turn the device in clockwise direction up to the stop (see Figure 4 and Figure 5).
3. Tighten the four flange screws.

 Select the tightening torque (approx. 10 Nm) so that the seal is effective and the device is not damaged or strained!

JPF-QC DN 65 - 100

Filters with a nominal size of 65 or more should preferably be installed in a horizontal line. When operating in a vertical line, the coarse particles deposited in the sludge trap cannot be backwashed out as optimally as when operating in a horizontal line.

3.4 Draining of the backwash water**CAUTION**

An adequately sized waste water connection (e.g. floor drain) in compliance with DIN 1986 must be provided.

In order to ensure safe drinking water hygiene, a free discharge of the waste water acc. to DIN EN 1717 must be ensured.

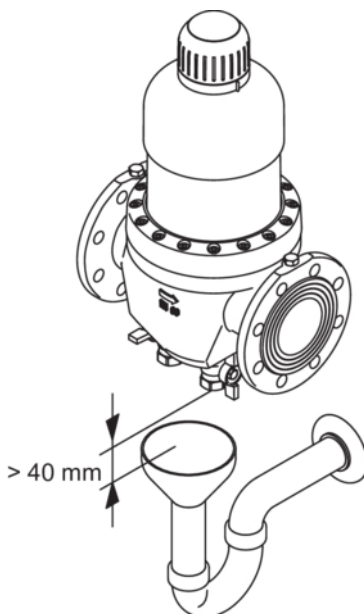
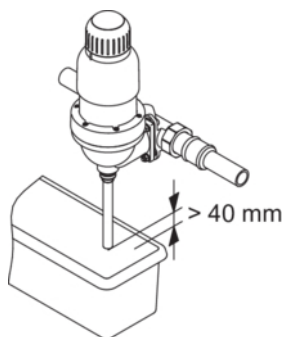
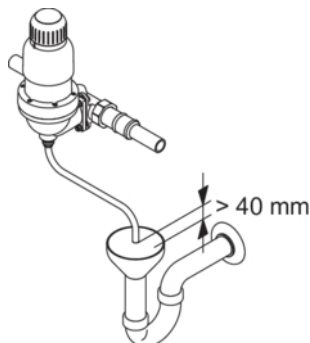
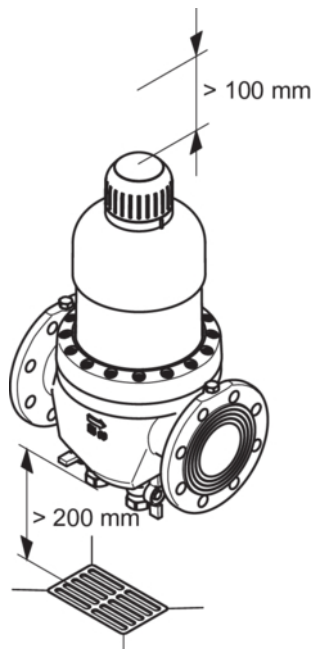
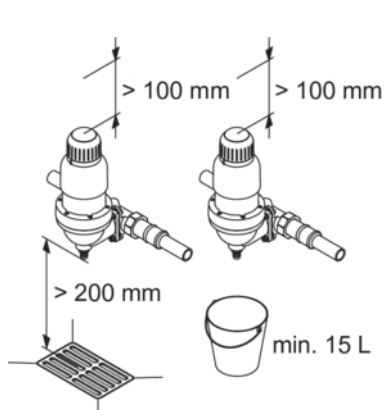
The drain must be large enough so that all of the wastewater can be drained simultaneously.

If a wastewater connection directly beneath the device is not possible, the backwash water can be drained away via a hose or a pipe that is connected from the backwashing water valve over a few meters to the closest wastewater connection. The dimensioning of this pipe must correspond to the backwashing water valve.

If a bucket is used to drain off the backwash water:

- **Attention:** If the mains pressure is high, water may spray out of the bucket. Protect objects near the bucket from water damage!
- Carry out the backwashing quickly and finish the backwashing process as soon as the bucket is half full. Otherwise the bucket could overflow.

3.4.1 Drainage options for the backwash water



3.5 Commissioning

Prior to initial commissioning (or to commissioning after maintenance work) fill the installed device with water and vent:

1. Open the upstream shut-off valve to fill the device with water. The device is now under mains pressure.
 2. **Attention:** Carry out a backwashing immediately so that the trapped air can escape (see chapter 4.1.3)! This prevents damage to the installation by water hammer pressure surges.
- After backwashing, the device is vented and ready for operation.

4 Operation

4.1 Cleaning of the sieve insert (backwashing)

A regular cleaning process is necessary to remove the residues from the sieve fabric of the device. This process is called **backwashing**.

Suction pipes are provided for backwashing, which rotate around the sieve fabric of the fine filter. The backwashing valve opens on the bottom side of the device. By reversing the water flow from inside to outside, deposits on the sieve fabric are carried away and rinsed out with the backwash water. The suction pipes also clean the inside of the transparent filter bowl with wiper lips during their movement.

The degree of contamination and cleaning process can be observed from the outside.

i The device is backwashed with filtered water. The filtered water supply of the domestic installation remains intact during the backwashing process. No dirty water can reach the pure water side during the backwashing.

4.1.1 Backwashing interval

If cleaning is not performed soon enough, the result may be damage to the sieve insert. Large quantities of filtered particles can deform the sieve fabric and in extreme case lead to tearing of the sieve fabric. In addition, larger deposit quantities can impair the backwashing function mechanically.

According to DIN EN 13443-1 backwashing the device is required at the latest every six months.

The manufacturer recommends a backwashing:

- at least every 2 months
- if the water pressure drops
- if the filter is visibly dirty

reasons. These can impair the functioning of the device, leading to leaks and, in the worse case scenario, to bursting of the device.

Experience has shown that new installations in the early stages of installation lead to increased dirt deposits. In this case, a more frequent backwashing is necessary.

4.1.2 Due date of backwashing

After backwashing, turn the setting ring on the front of the device to the next backwashing due date, as a reminder.

4.1.3 Backwashing



WARNING

Persons who, due to their physical, sensory or mental abilities or their inexperience or lack of knowledge, are unable to operate the device safely may not operate it without supervision or instruction from a responsible person.

Before carrying out a backwash, ensure that the wastewater connection is functional.

At the end of the backwashing process, turn the handwheel until it engages so that no more backwashing water escapes. Otherwise, water may constantly escape and cause water damage.

1. Turn handwheel counter-clockwise up to stop. **Backwashing water escapes.**
 2. Turn handwheel clockwise up to stop. Ensure that no water escapes.
- The backwashing process is completed (see chapter 4.1).

4.2 Conversions, changes



WARNING

Unauthorised conversions and changes are forbidden for safety

4.3 Maintenance, repair, spare parts



WARNING

The device may only be repaired by qualified technical personnel.

Only use original spare parts for repairs.

Before performing work on the device that goes beyond pure operational use, the device must be depressurised! If this is ignored, the result may be uncontrolled egress of water resulting in water damage to the building/home.

4.4 Temporary removal of the device



WARNING

If the device is removed due to an interruption of operation:

- **Protect the flange surfaces against damage to ensure proper sealing.**
- **Protect the device from dirt so as not to impair drinking water hygiene.**
- **Store the device in a frost-free place to prevent damage caused by freezing water and leakage.**

When recommissioning the device, proceed as with a new installation.

5 Fault

Fault	Possible cause	Remedy
Backwash water continues running.	Backwash valve is not fully closed.	Repeat backwashing and then turn the handwheel fully home to the stop.
	Dirt in backwash valve.	
Water flow decreases.	Sieve clogged.	Perform backwashing.
There are leaks in the filter bowl.	Damaged seals.	Inform the installer or the closest customer service point.
Filter bowl becomes clouded. Hairline cracks on the filter bowl.	Filter bowl was exposed to high temperatures or solvents.	<ul style="list-style-type: none"> • Inform the installer or the closest customer service point. • If water escapes, close shut-off valves. Have the filter bowl replaced immediately.

Troubleshooting

6 Servicing

6.1 Cleaning

**CAUTION**

Do not use household cleaning agents to clean the outside of the device, but only use clear water to avoid embrittlement of the plastic.

6.2 Warranty and maintenance

Prerequisite for obtaining the statutory warranty claim is regular backwashing (see chapter 4.1). The DIN EN 13443-1 prescribes that the backwashing must take place every six months. JUDO however recommends to comply with the information in chapter 4.1.1 Backwashing interval.

To ensure the process operates successfully as long as possible, regular inspection and routine servicing of the device are essential. Where home automation is concerned, this is governed by DIN EN 806-5.

We recommend the conclusion of a maintenance contract, which is the best way to ensure a good operating function, even beyond the warranty period. The skilled tradesmen or the factory customer service are suitable partners for regular maintenance work and the supply of consumables and wear materials as well as for possible repairs.

7 Technical data

Backwash protective filter

JUDO PROFI-QC

JPF-QC

The water to be filtered must comply with the European Drinking Water Directive.

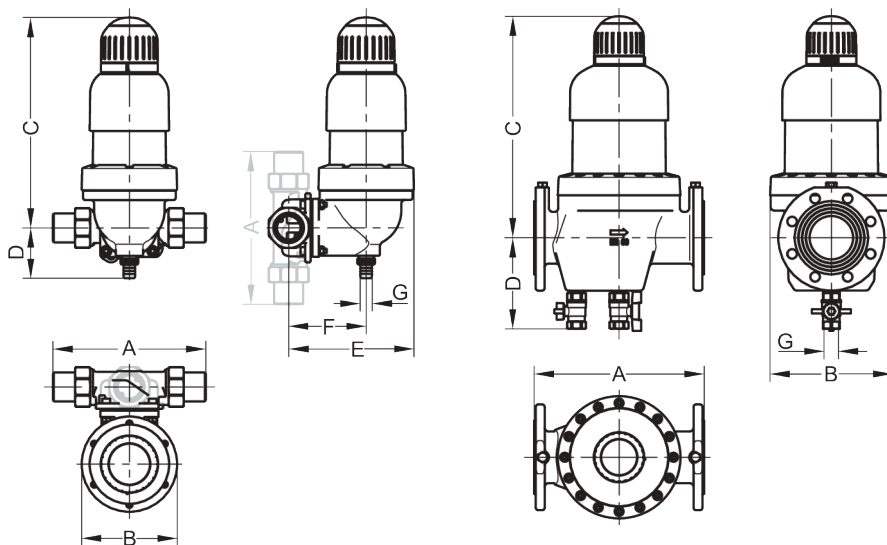
Information about:	JPF-QC 1½"	JPF-QC 2"	JPF-QC DN 65	JPF-QC DN 80	JPF-QC DN 100
Pipe connection	1½"	2"	DN 65	DN 80	DN 100
Backwashing volume flow ¹⁾	0,3 - 0,8 L/s	0,3 - 0,8 L/s	0,3 - 0,8 L/s	0,5 - 1,5 L/s	0,5 - 1,5 L/s
Nominal pressure	PN 16	PN 16	PN 16	PN 10	PN 10
Operating pressure	1,5 - 16 bar	1,5 - 16 bar	1,5 - 16 bar	1,5 - 10 bar	1,5 - 10 bar
Rated flow after backwashing with 0,2 (0,5) bar Druckverlust	13 (18) m³/h	16 (22) m³/h	25 (28) m³/h	50 (65) m³/h	60 (78) m³/h
Mesh size ²⁾ sieve insert	100 µm 0.1 mm	100 µm 0.1 mm	100 µm 0.1 mm	100 µm 0.1 mm	100 µm 0.1 mm
Water temperature and ambient temperature	max. 30 °C	max. 30 °C	max. 30 °C	max. 30 °C	max. 30 °C
Threaded connection according to	DIN EN 10226-1		--		
Weight	9 kg	10,5 kg	15 kg	29 kg	31 kg
Order no.	8010213	8010214	8010215	8010216	8010217

1) Applies to a fully opened backwashing valve and 2 - 3 bar mains pressure.

2) Standard sieve mesh size

Available special sieve mesh sizes (30 µm / 0.03 mm, 320 µm / 0.32 mm and 500 µm / 0.5 mm) for the industrial use are not part of the testing acc. to DIN EN 13443-1 and DIN 19628 and therefore can not bear the DIN-DVGW mark.

7.1 Installation dimensions



	JPF-QC 1½"	JPF-QC 2"	JPF-QC DN 65	JPF-QC DN 80	JPF-QC DN 100
A	252	280	240	320	320
B	158	158	185	231	231
C	348	348	350	419	426
D	84	84	163	172	182
E	207	215	--	--	--
F	128	136	--	--	--
G	20	20	¾" IG	¾" IG	¾" IG

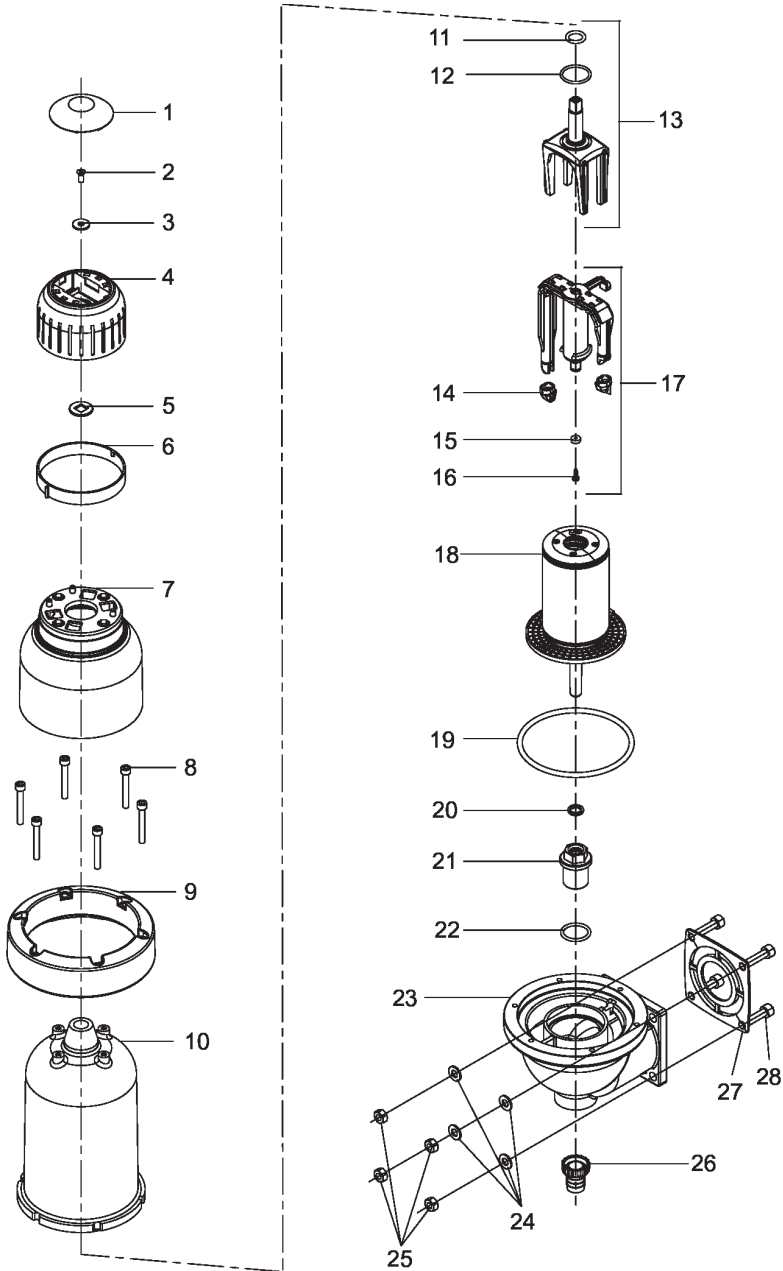
- A Installation length
 B Unit depth
 C Height above the pipe middle
 D Height below the pipe middle
 E Installation depth up to the pipe middle
 F Abwasseranschluss bis Rohrmittle
 G Waste water nominal diameter

7.2 Accessories

- JUDO Safety block JSB (Best.-Nr. 8105001) for retrofitting the filter with pressure reducer, non-return valve, inlet and outlet pressure manometer (for JPF-QC 1½" - 2")

7.3 Spare parts

JPF-QC 1½" - 2"



Pos.	Designation	Pcs	Order No.	AU ¹⁾ / piece
	Wearing parts set „Sieve 0,1 mm, suction pipe and gasket-s“ (consisting of pos. 11, 12, 17, 18, 19, 20)	1	2021360	280
	Wearing parts set „Gaskets“ **** (consisting of pos. 11, 12, 14, 15, 16, 19, 20, 27)	1	2010337	55
	Spare parts set „Handwheel“ (consisting of pos. 1, 2, 3, 4, 6)	1	2020994	25
1	Handwheel cover	1		
2	Countersunk screw M5×12	1		
3	Disc A 6,4	1		
4	Handwheel	1		
5	Spacer	1		
6	Adjusting ring	1		
7	Abdeckung Filterglocke	1		
8	Zylinderschraube M6×45	6		
9	Flanschring	1		
10	Cover filter hood	1	2010422	371
11	O-ring 15×3,2	1		
12	O-ring 28×2,5	1		
13	Driver complete	1	2021277	29
14	Nozzle	2		
15	Suction pipe gasket	1		
16	Sheet metal screw 3,5×13	1		
17	Suction pipe complete	1		
18	Sieve insert 0,1 mm	1		
19	O-ring 113,67×5,33	1		
20	O-ring 12×3	1		
21	Connection piece	1	2021288	21
22	O-ring 26x3	1		
23	Filter bottom	1		
24	Disc A 8,4	4		

List of spare parts JPF-QC 1½" - 2"

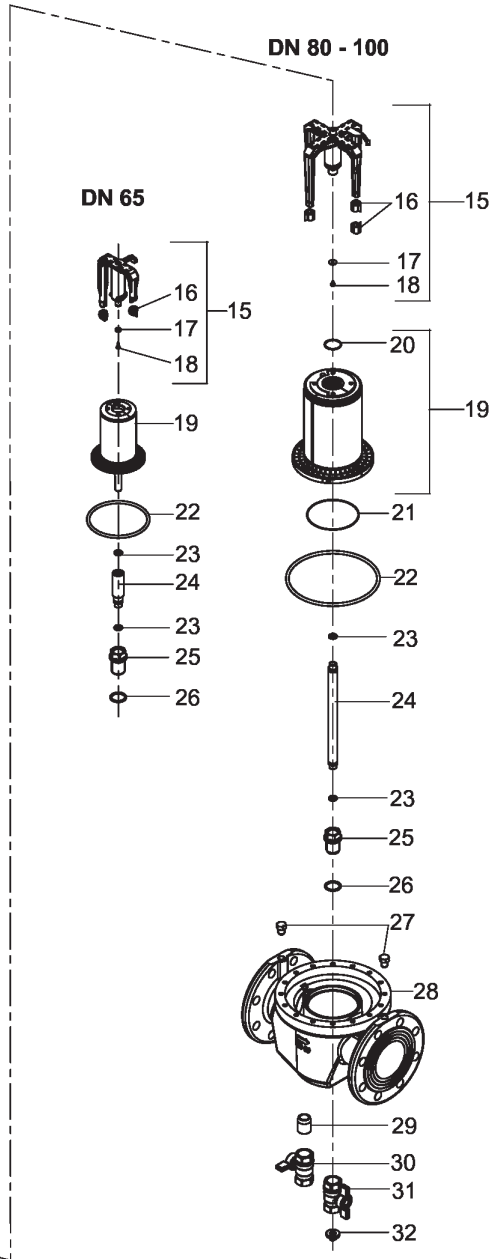
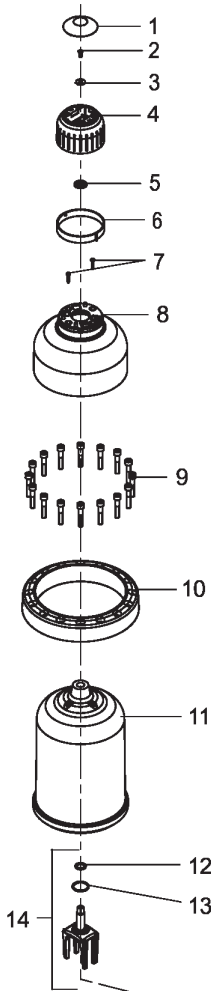
Pos.	Designation	Pcs	Order No.	AU ¹⁾ / piece
25	Hexagonal nut M8	4		
26	Hose coupling	1		
27	Profile flange gasket	1		
28	Cylinder screw M8×30	4		

List of spare parts JPF-QC 1½" - 2"

1) AU = Accounting unit (parts without AU are only available as part of a set)

Replacement interval: *** = 3 years **** = 4 years

JPF-QC DN 65 - 100



Pos.	Bezeichnung	Stk	Best. Nr.	VE ¹⁾ / Stk.
	DN 65: Wearing parts set „Sieve 0,1 mm, suction pipe and gaskets“ (consisting of pos. 12, 13, 15, 19, 22, 23) ***	1	2021360	280
	DN 80 - 100: Wearing parts set „Sieve 0,1 mm, suction pipe and gaskets“ (consisting of pos. 12, 13, 15, 19, 21, 22, 23) ***	1	2021361	590
	DN 65: Wearing parts set „Gaskets“ (consisting of pos. 12, 13, 16, 17, 18, 22, 23) ****	1	2010337	55
	DN 80 - 100: Wearing parts set „Gaskets“ (consisting of pos. 12, 13, 16, 17, 18, 20, 21, 22, 23) ****	1	2010339	76
	Spare parts set „Handwheel“ (consisting of pos. 1, 2, 3, 4, 6)	1	2020994	25
1	Handwheel cover	1		
2	Countersunk screw M5×12	1		
3	Disc A 6,4	1		
4	Handwheel	1		
5	Spacer	1		
6	Adjusting ring	1		
7	Sheet metal screw 4,2×19 DN 65	2		
7	Sheet metal screw 3,9×22 DN 80 - 100	2		
8	Cover filter bowl DN 65	1		
8	Cover filter bowl DN 80 - 100	1		
9	Cylinder head screw M6×45 DN 65	6		
9	Cylinder head screw M8×45 DN 80 - 100	16		
10	Flange ring DN 65	1		
10	Flange ring DN 80 - 100	1		
11	Filter bowl DN 65	1	2010422	371
11	Filter bowl DN 80 - 100	1	2021139	590
12	O-ring 15×3,2	1		
13	O-ring 28×2,5	1		
14	Driver complete	1	2021277	29
15	Suction pipe complete DN 65	1		
15	Suction pipe complete DN 80 - 100	1		

List of spare parts JPF-QC DN 65 - 100

Pos.	Bezeichnung	Stk	Best. Nr.	VE ¹⁾ / Stk.
16	Nozzle DN 65	2		
16	Nozzle DN 80 - 100	4		
17	Suction pipe gasket DN 65	1		
17	Suction pipe gasket DN 80 - 100	1		
18	Sheet metal screw 3,5×13 DN 65	1		
18	Sheet metal screw 4,2×9,5 DN 80 - 100	1		
19	Sieve insert 0,1 mm DN 65	1		
19	Sieve insert 0,1 mm DN 80 - 100	1		
20	O-ring 29,87×1,78 DN 80 - 100	1		
21	O-ring 100×1,5 DN 80 - 100	1		
22	O-ring 113,67×5,33 DN 65	1		
22	O-ring 178×6 DN 80 - 100	1		
23	O-ring 12×3 DN 65	1		
23	O-ring 12×3 DN 80 - 100	2		
24	Flush pipe DN 65	1	2021341	35
24	Flush pipe DN 80	1	2021342	31
24	Flush pipe DN 100	1	2021343	23
25	Connection piece DN 65 - 100	1	2010521	80
26	O-ring 26x3 DN 65 - 100	1		
27	Plug ¼"	2		
28	Filter bottom DN 65	1		
28	Filter bottom DN 80	1		
28	Filter bottom DN 100	1		
29	Nipple	1		
30	Ball valve (blue handle)	1	2021337	52
31	Ball valve (black handle)	1	2021336	52
32	Orifice disc DN 80 - 100	1	2021346	15

List of spare parts JPF-QC DN 65 - 100

- 1) AU = Accounting unit (parts without AU are only available as part of a set)
- 2) Accounting unit not specified at the time of going to press

Replacement interval:

*** = 3 years

**** = 4 years

8 Disposal

Packaging waste is to be sent to the local recycling system.

To protect environment, old appliances must not be disposed of with household waste. Instead, use the local collection and return points, which are committed to free and environmentally sound disposal.

9 Maintenance log

Product designation:

Backwash protective filter

Order number:

Serial number:

Date	Work activities performed	Company / Signature

Date	Work activities performed	Company / signature

10 Customer service

DE	JUDO Wasseraufbereitung GmbH Postfach 380 • D-71351 Winnenden Phone +49 (0)7195 / 692-0 E-mail: info@judo.eu • judo.eu
AT	JUDO Wasseraufbereitung GmbH • Niederlassung Österreich Zur Schleuse 5 • A-2000 Stockerau Phone +43 (0)22 66 / 6 40 78 • Fax +43 (0)22 66 / 6 40 79 E-mail: info@judo-online.at • judo-online.at
CH	JUDO Wasseraufbereitung AG Industriestrasse 15 • CH-4410 Liestal Phone +41 (0)61 906 40 50 • Fax +41 (0)61 906 40 59 E-mail: info@judo-online.ch • judo-online.ch
BENELUX	JUDO Wasseraufbereitung GmbH • Filiaal - Filiale BeNeLux Laarbeeklaan - Av. du Laerbeek, 72 A1 • B-1090 Brussel-Bruxelles Phone +32 (0)24 60 12 88 • Fax +32 (0)24 61 18 85 E-mail: info.benelux@judo.eu • judo.eu
FR	JUDO France SARL 76 Rue de la Plaine des Bouchers (Technosud) • F-67100 Strasbourg Phone +33 (0)3 88 65 93 94 • Fax +33 (0)3 88 65 98 49 E-mail : info@judo.fr • judo.fr

Installed by / on:

All pictorial, dimensional and implementation information correspond to the date of going to press. We reserve the right to make changes due to technical progress and continuing development. Model and product claims cannot be lodged.